

STATISTICAL SECTION

- 107.. Statistical Summary
- 108.. Summary of Benefits by Type
- 109.. Schedules of Changes in Plan Net Assets, Last 10 Fiscal Years
- 110.. Summaries of Changes in Membership During 2008-2009
- 112.. 2008-2009 New Service Retirees
- 114.. Schedules of Average Benefit Payments to New Retirees
- 116.. Comparisons of Actuarial Assets and Total Actuarial Liabilities
- 117.. Growth in Membership
- 118.. Schedules of Covered Employees

STATISTICAL SUMMARY

Benefit Recipients

The largest percentage of the Systems' benefit recipients are service retirees. Service retirement benefits are payable to members who have met age and service requirements. The number of PSRS service retirees increased by 1,852 from 38,045 at June 30, 2008 to 39,897 at June 30, 2009. The number of PEERS service retirees increased by 765 from 16,696 at June 30, 2008 to 17,461 at June 30, 2009.

Disability benefits in PSRS and PEERS are paid to members who are unable to earn a livelihood due to permanent disability and who have met certain eligibility requirements. The number of PSRS disability retirees increased by seven from 691 at June 30, 2008 to 698 at June 30, 2009. The number of PEERS disability retirees increased by 27 from 514 at June 30, 2008 to 541 at June 30, 2009.

In both PSRS and PEERS, beneficiary payments are available to survivors if the retiree elected this option. Three Joint-and-Survivor options and two Term-Certain options are available. In PSRS, survivor benefits are also available to designated beneficiaries of members who die before retirement.

The charts on page 108 detail the number of benefit recipients by type and monthly benefit amount for each System.

Pension Funding

An unfunded actuarial accrued liability (UAAL) for pension benefits generally represents the difference between the present value of all benefits estimated to be payable to plan members as a result of their age, salary, and service through the valuation date and the actuarial value of plan assets available to pay those benefits. This amount changes over time as a result of changes in accrued benefits, pay levels, rates of return on investments, changes in actuarial assumptions, and changes in the demographics of the employee base. Each year an outside actuary performs a valuation to determine the present value of the benefits payable (actuarial accrued liability) and compares this to the assets available to arrive at the funded status of the Systems.

The charts on page 116 show a comparison of the assets and liabilities of the Systems over time. At June 30, 2009, PSRS was 79.9% funded and PEERS was 80.7%. These percentages have remained relatively constant for the past four fiscal years.

Changes in Net Assets

The charts on page 109 detail a 10-year history of the additions (revenue) and deductions (expenses) of the Systems.

Other charts in this section detail demographic information concerning our members and employers.

The data in this section was derived from internal sources and the annual actuarial valuation reports.

SUMMARY OF BENEFITS BY TYPE

PSRS

Amount of Monthly Benefit	Service Retirement	Disability Retirement	Beneficiary Recipients			Term Certain	Total
			Disability	Survivors	Beneficiary		
<\$1,000	3,111	47	82	627	371	3	4,241
\$1,000 - \$1,999	5,787	342	50	-	725	2	6,906
\$2,000 - \$2,999	9,850	241	11	-	595	3	10,700
\$3,000 - \$3,999	10,369	59	2	-	373	4	10,807
\$4,000 - \$4,999	6,609	6	1	-	176	6	6,798
\$5,000 - \$5,999	2,666	1	-	-	89	1	2,757
\$6,000+	1,505	-	-	-	32	-	1,537
Total	39,897	696	146	627	2,361	19	43,746

PEERS

Amount of Monthly Benefit	Service Retirement	Disability Retirement	Beneficiary Recipients			Term Certain	Total
			Disability	Survivors	Beneficiary		
<\$500	10,678	404	116	-	765	16	11,979
\$500 - \$999	4,100	126	15	-	166	5	4,412
\$1,000 - \$1,999	2,133	10	2	-	56	5	2,206
\$2,000 - \$2,999	417	-	-	-	4	-	421
\$3,000 - \$3,999	95	-	-	-	-	-	95
\$4,000+	38	-	-	-	-	-	38
Total	17,461	540	133	-	991	26	19,151

SCHEDULES OF CHANGES IN PLAN NET ASSETS, LAST 10 FISCAL YEARS

(Dollar amounts in thousands)

PSRS

	Fiscal Year									
	2000	2001	2002	2003	2004	2005	2006	2007	2008	2009
Additions by source										
Member contributions	\$ 319,579	\$ 335,275	\$ 356,685	\$ 378,434	\$ 405,614	\$ 432,500	\$ 502,980	\$ 514,163	\$ 572,810	\$ 599,582
Employer contributions	304,944	324,526	340,000	355,979	359,763	389,416	429,579	472,217	521,242	563,454
Investment income	1,455,003	(407,172)	(582,958)	873,340	2,402,566	1,958,622	2,235,836	4,125,164	(1,385,701)	(5,301,374)
Other income	274	810	2761	351	488	476	264	280	370	628
Total additions by source	2,079,800	253,439	116,488	1,608,104	3,168,431	2,781,014	3,168,659	5,111,824	(291,279)	(4,137,710)
Deductions by type										
Monthly benefits										
Service retirement	601,718	706,647	810,898	877,538	958,181	1,057,430	1,152,217	1,254,164	1,363,571	1,490,693
Service retirement - PLSO	-	-	-	-	9,176	32,479	40,177	52,122	59,793	74,042
Disability	9,762	10,719	11,621	11,901	12,720	13,613	14,297	14,982	15,599	16,355
Beneficiary	27,501	32,525	37,916	41,011	44,663	49,056	54,148	59,295	64,011	70,518
Lump-sum refunds										
Death	5,603	6,170	6,872	6,781	7,173	6,131	7,188	6,801	7,058	7,274
Withdrawal/transfers	30,495	28,877	24,907	21,693	28,845	28,215	29,206	37,209	39,243	39,134
Administrative expenses/other	3,712	4,009	4,486	4,675	5,274	5,614	6,754	7,113	8,074	10,135
Total deductions by type	678,791	788,947	896,700	963,599	1,066,032	1,192,538	1,303,987	1,431,686	1,557,349	1,708,151
Changes in plan net assets	\$ 1,401,009	(\$ 535,508)	(\$ 780,212)	\$ 644,505	\$ 2,102,399	\$ 1,588,476	\$ 1,864,672	\$ 3,680,138	(\$ 1,848,628)	(\$ 5,845,861)

PEERS

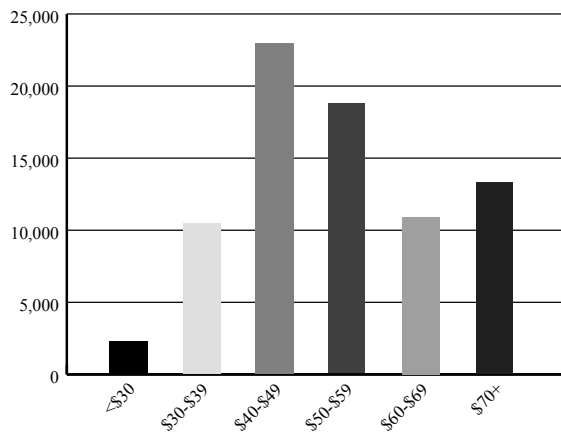
	Fiscal Year									
	2000	2001	2002	2003	2004	2005	2006	2007	2008	2009
Additions by source										
Member contributions	\$ 34,499	\$ 37,934	\$ 46,217	\$ 48,994	\$ 50,625	\$ 55,699	\$ 68,018	\$ 73,071	\$ 81,370	\$ 89,427
Employer contributions	34,186	37,500	45,773	48,933	49,977	53,110	61,746	69,235	77,989	85,916
Investment income	113,954	(29,647)	(46,732)	73,188	198,389	170,921	197,629	373,198	(130,619)	(489,552)
Other income	14	73	26	16	10	9	3	-	-	-
Total additions by source	182,653	45,860	45,284	171,131	299,001	279,739	327,396	515,504	28,741	(314,209)
Deductions by type										
Monthly benefits										
Service retirement	39,071	46,093	56,305	63,333	69,899	77,333	84,664	93,716	104,352	115,757
Service Retirement - PLSO	-	-	-	-	520	1,527	2,487	3,454	3,133	3,676
Disability	945	1,122	1,304	1,448	1,503	1,686	1,840	1,968	2,125	2,353
Beneficiary	1,514	1,823	2,262	2,618	2,949	3,360	3,670	4,044	4,454	4,881
Lump-sum Refunds										
Death	409	432	425	475	593	647	542	816	675	765
Withdrawal/transfers	9,493	8,769	7,441	7,559	9,827	11,245	11,502	12,883	14,833	14,908
Administrative expenses/other	1,920	2,246	2,575	2,946	3,210	3,564	4,358	4,427	4,682	5,440
Total deductions by type	53,352	60,485	70,312	78,379	88,501	99,362	109,063	121,308	134,254	147,780
Changes in plan net assets	\$ 129,301	(\$ 14,625)	(\$ 25,028)	\$ 92,752	\$ 210,500	\$ 180,377	\$ 218,333	\$ 394,196	(\$ 105,514)	(\$ 461,989)

PSRS SUMMARY OF CHANGES IN MEMBERSHIP DURING 2008-2009

	Male	Female	Total
Membership, July 1, 2008	19,797	70,219	90,016
New members added	1,423	4,626	6,049
Less:			
Service retirements	603	2,018	2,621
Disability retirements	5	32	37
Withdrawals	548	1,535	2,083
Deaths	20	36	56
Memberships terminated	74	277	351
Other	5	7	12
	1,255	3,905	5,160
Net change in membership 2008-2009	168	721	889
Membership July 1, 2009	19,965	70,940	90,905

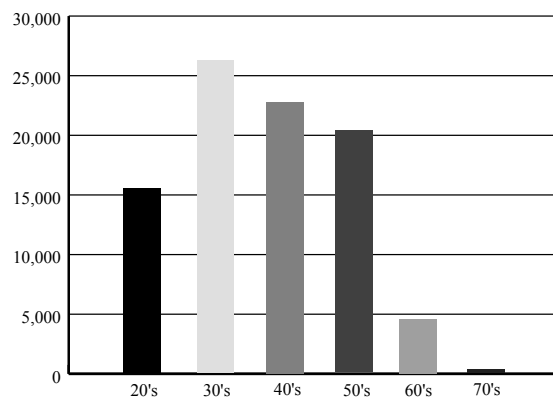
Note: Eight members eligible for retirement died during the year. These are reflected as deaths on this schedule, but as new retirees on page 112.

2008-2009 PSRS Members by Annual Salary

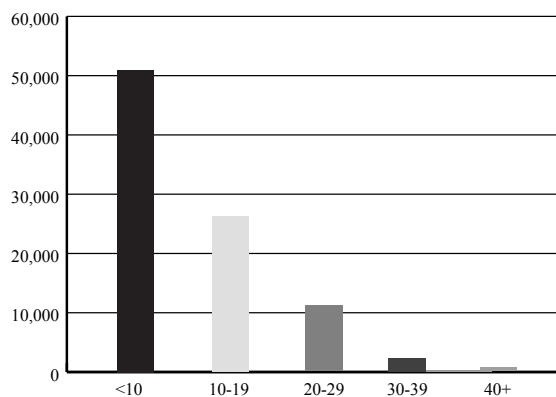


(Dollar amounts in thousands)

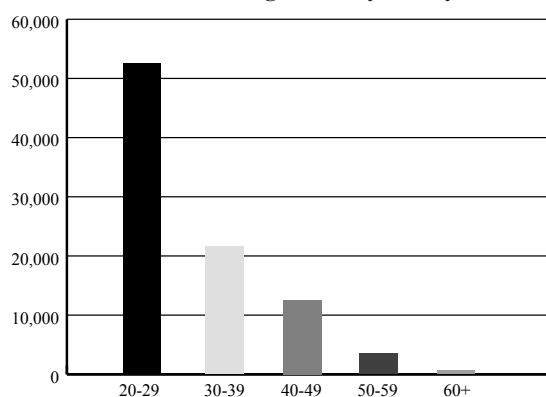
2008-2009 PSRS Members by Current Age



2008-2009 PSRS Members by Total Service Credit



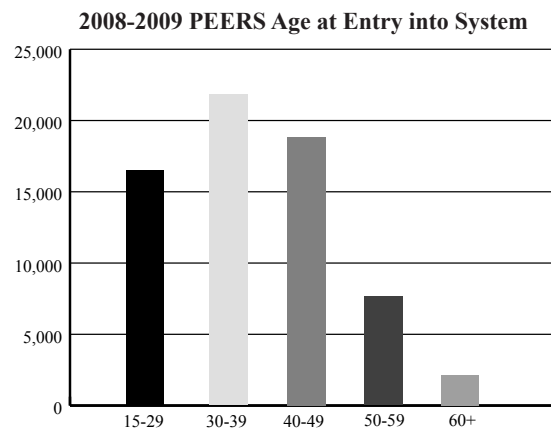
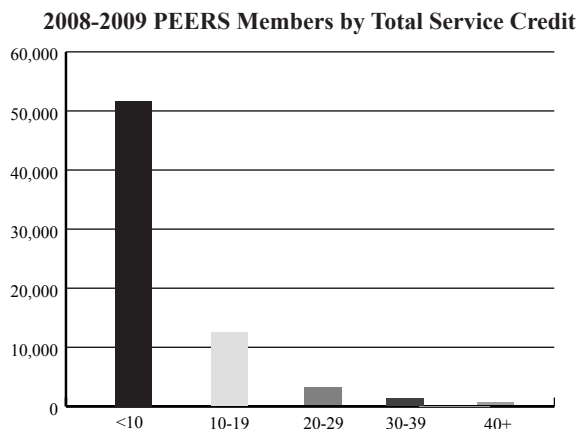
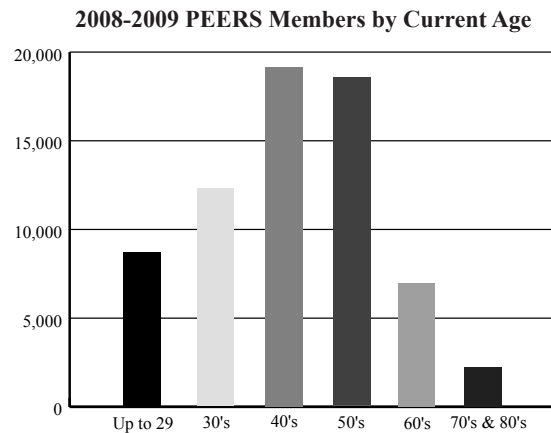
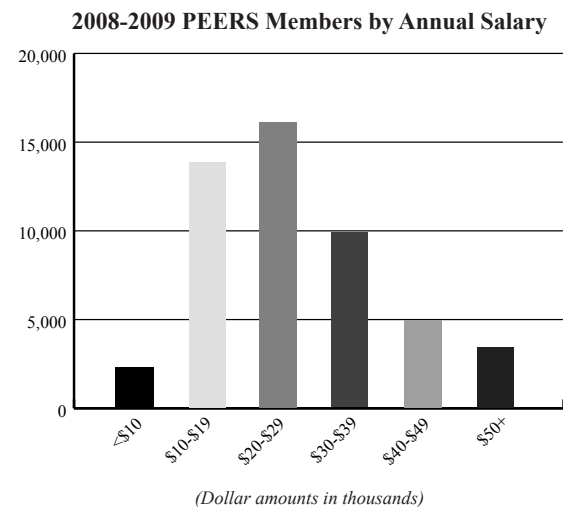
2008-2009 PSRS Age at Entry into System



PEERS SUMMARY OF CHANGES IN MEMBERSHIP DURING 2008-2009

	Male	Female	Total
Membership, July 1, 2008	16,406	51,082	67,488
New members added	2,038	5,145	7,183
Less:			
Service retirements	372	948	1,320
Disability retirements	11	33	44
Withdrawals	1,249	3,310	4,559
Deaths	62	55	117
Memberships terminated	336	754	1,090
Other	6	19	25
	2,036	5,119	7,155
Net change in membership 2008-2009	2	26	28
Membership July 1, 2009	16,408	51,108	67,516

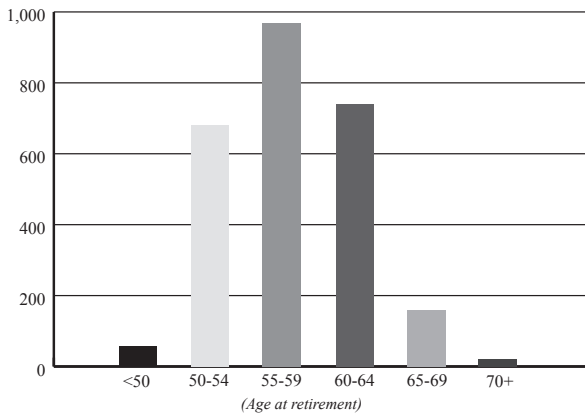
Note: Five members eligible for retirement died during the year. These are reflected as deaths on this schedule, but as new retirees on page 113.



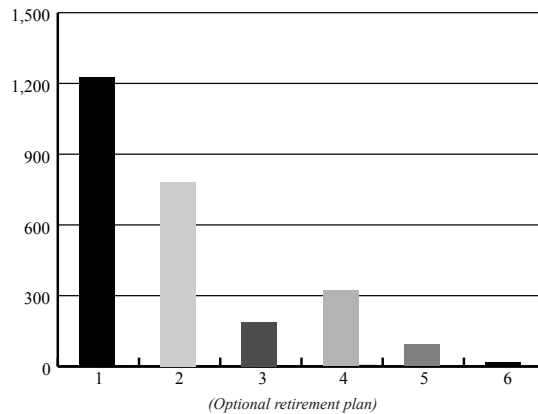
PSRS 2008-2009 NEW SERVICE RETIREES

	Service Retirees	Disability Retirees	Beneficiaries
Retirees July 1, 2008	38,045	691	3,002
Added during the year	2,629	37	287
Died during the year	(780)	(31)	(108)
Other	3	(1)	(28)
Retirees June 30, 2009	39,897	696	3,153

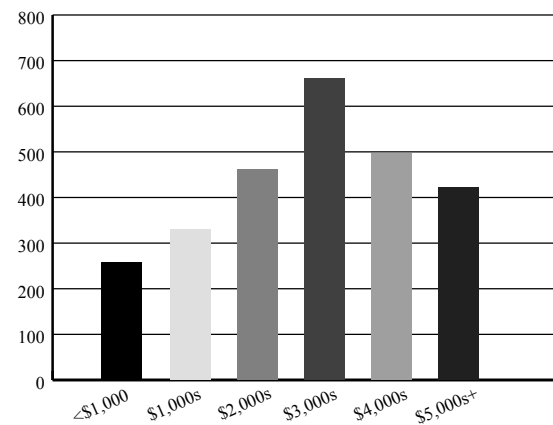
2008-2009 New Service Retirees by Age at Retirement



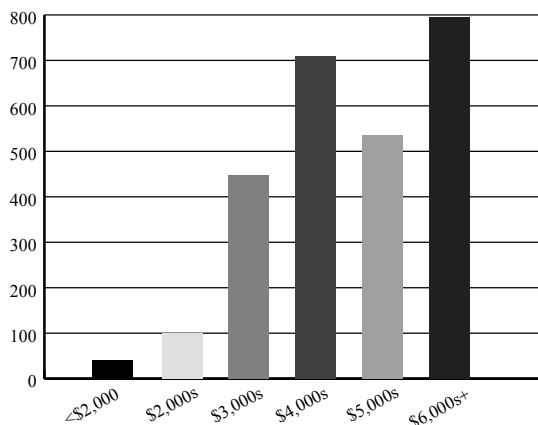
2008-2009 New Service Retirees by Retirement Plan Option



2008-2009 New Service Retirees by Single Life Benefit Amount



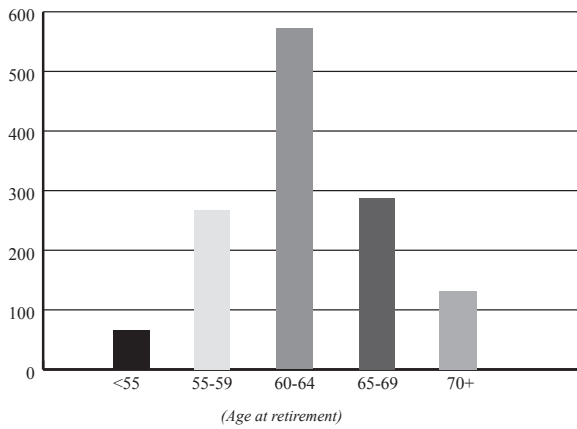
2008-2009 New Service Retirees by Final Average Monthly Salary



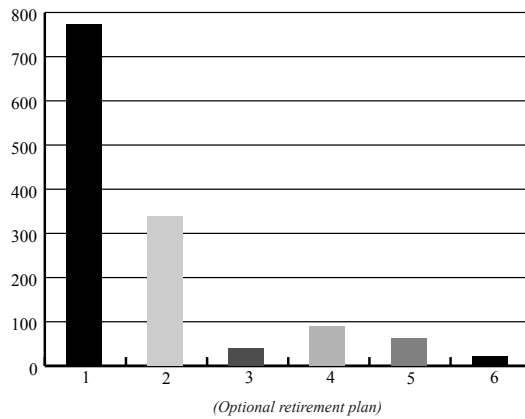
PEERS 2008-2009 NEW SERVICE RETIREES

	Service Retirees	Disability Retirees	Beneficiaries
Retirees July 1, 2008	16,696	514	1,078
Added during the year	1,325	44	112
Died during the year	(551)	(17)	(38)
Other	(9)	(1)	(2)
Retirees June 30, 2009	17,461	540	1,150

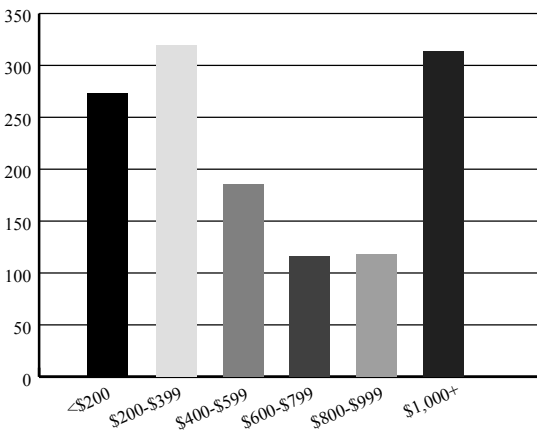
2008-2009 New Service Retirees by Age at Retirement



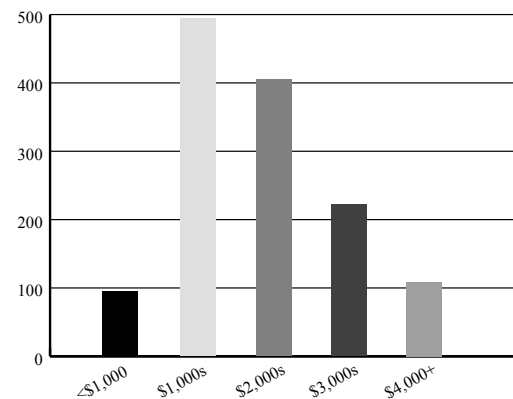
2008-2009 New Service Retirees by Retirement Plan Option



2008-2009 New Service Retirees by Single Life Benefit Amount



2008-2009 New Service Retirees by Final Average Monthly Salary



PSRS SCHEDULE OF AVERAGE BENEFIT PAYMENTS TO NEW RETIREES

Retirement Effective Dates	Years of Service Credit							
	5 - 9.9	10 - 14.9	15 - 19.9	20 - 24.9	25 - 29.9	30 - 34.9	35 - 39.9	40+
2008-2009								
Average monthly benefit	\$ 627	\$ 1,178	\$ 2,035	\$ 2,861	\$ 3,590	\$ 4,598	\$ 6,028	\$ 5,749
Average final average salary	\$ 3,901	\$ 4,057	\$ 4,801	\$ 5,136	\$ 5,343	\$ 5,697	\$ 6,436	\$ 5,749
Number of retirees	198	186	198	411	617	892	116	11
2007-2008								
Average monthly benefit	\$ 612	\$ 1,079	\$ 1,876	\$ 2,765	\$ 3,453	\$ 4,410	\$ 6,124	\$ 6,515
Average final average salary	\$ 3,741	\$ 3,792	\$ 4,548	\$ 4,935	\$ 5,159	\$ 5,494	\$ 6,607	\$ 6,515
Number of retirees	226	197	200	406	646	798	105	12
2006-2007								
Average monthly benefit	\$ 614	\$ 1,010	\$ 1,772	\$ 2,748	\$ 3,283	\$ 4,322	\$ 6,145	\$ 5,826
Average final average salary	\$ 3,848	\$ 3,499	\$ 4,319	\$ 4,889	\$ 4,934	\$ 5,380	\$ 6,576	\$ 5,826
Number of retirees	162	160	159	338	653	783	115	6
2005-2006								
Average monthly benefit	\$ 572	\$ 1,021	\$ 1,709	\$ 2,558	\$ 3,263	\$ 4,299	\$ 5,555	\$ 5,833
Average final average salary	\$ 3,659	\$ 3,628	\$ 4,214	\$ 4,580	\$ 4,854	\$ 5,346	\$ 5,985	\$ 5,833
Number of retirees	177	137	137	358	778	744	96	6
2004-2005								
Average monthly benefit	\$ 579	\$ 1,314	(1)	\$ 2,977	(2)	\$ 4,240	(3)	\$ 5,751
Average final average salary	\$ 3,630	\$ 3,783	(1)	\$ 4,652	(2)	\$ 5,216	(3)	\$ 5,751
Number of retirees	158	323	(1)	1,165	(2)	973	(3)	11
2003-2004								
Average monthly benefit	\$ 510	\$ 1,363	(1)	\$ 2,944	(2)	\$ 4,205	(3)	\$ 4,042
Average final average salary	\$ 3,243	\$ 3,849	(1)	\$ 4,582	(2)	\$ 5,155	(3)	\$ 4,042
Number of retirees	158	269	(1)	1,097	(2)	927	(3)	12
2002-2003								
Average monthly benefit	\$ 493	\$ 1,295	(1)	\$ 2,832	(2)	\$ 4,005	(3)	\$ 4,241
Average final average salary	\$ 3,210	\$ 3,591	(1)	\$ 4,418	(2)	\$ 4,936	(3)	\$ 4,241
Number of retirees	111	247	(1)	930	(2)	752	(3)	17
2001-2002								
Average monthly benefit	\$ 486	\$ 1,253	(1)	\$ 2,738	(2)	\$ 3,872	(3)	\$ 4,823
Average final average salary	\$ 3,276	\$ 3,637	(1)	\$ 4,248	(2)	\$ 4,824	(3)	\$ 4,823
Number of retirees	93	232	(1)	1,034	(2)	875	(3)	18
2000-2001								
Average monthly benefit	\$ 478	\$ 1,165	(1)	\$ 2,621	(2)	\$ 3,593	(3)	\$ 5,431
Average final average salary	\$ 3,020	\$ 3,245	(1)	\$ 4,072	(2)	\$ 4,552	(3)	\$ 5,431
Number of retirees	75	276	(1)	1,232	(2)	1,027	(3)	18
1999-2000								
Average monthly benefit	\$ 506	\$ 1,128	(1)	\$ 2,472	(2)	\$ 3,514	(3)	\$ 5,208
Average final average salary	\$ 2,949	\$ 3,310	(1)	\$ 3,900	(2)	\$ 4,447	(3)	\$ 5,209
Number of retirees	95	218	(1)	913	(2)	912	(3)	14

Prior year data is not available in five-year service increments. Chart will be updated as data becomes available.

- (1) Column to the left covers those with 10 to 19.9 years of service.
- (2) Column to the left covers those with 20 to 29.9 years of service.
- (3) Column to the left covers those with 30 to 39.9 years of service.

PEERS SCHEDULE OF AVERAGE BENEFIT PAYMENTS TO NEW RETIREES

Retirement Effective Dates	Years of Service Credit					
	5 - 9.9	10 - 14.9	15 - 19.9	20 - 24.9	25 - 29.9	30+
2008-2009						
Average monthly benefit	\$ 206	\$ 374	\$ 637	\$ 1,021	\$ 1,365	\$ 1,727
Average final average salary	\$ 1,821	\$ 2,011	\$ 2,349	\$ 2,847	\$ 3,104	\$ 3,240
Number of retirees	417	264	152	216	164	112
2007-2008						
Average monthly benefit	\$ 187	\$ 382	\$ 655	\$ 966	\$ 1,274	\$ 1,605
Average final average salary	\$ 1,741	\$ 2,070	\$ 2,451	\$ 2,724	\$ 2,930	\$ 2,969
Number of retirees	363	262	142	229	155	94
2006-2007						
Average monthly benefit	\$ 174	\$ 363	\$ 637	\$ 861	\$ 1,240	\$ 1,611
Average final average salary	\$ 1,607	\$ 1,918	\$ 2,368	\$ 2,423	\$ 2,838	\$ 3,038
Number of retirees	370	214	166	224	158	88
2005-2006						
Average monthly benefit	\$ 178	\$ 370	\$ 586	\$ 822	\$ 1,111	\$ 1,451
Average final average salary	\$ 1,611	\$ 1,971	\$ 2,134	\$ 2,306	\$ 2,564	\$ 2,708
Number of retirees	310	184	165	177	156	77
2004-2005						
Average monthly benefit	\$ 159	\$ 401	(1)	\$ 952	(2)	\$ 1,468
Average final average salary	\$ 1,454	\$ 1,788	(1)	\$ 2,427	(2)	\$ 2,771
Number of retirees	306	366	(1)	322	(2)	97
2003-2004						
Average monthly benefit	\$ 167	\$ 402	(1)	\$ 906	(2)	\$ 1,250
Average final average salary	\$ 1,519	\$ 1,737	(1)	\$ 2,305	(2)	\$ 2,397
Number of retirees	222	338	(1)	306	(2)	71
2002-2003						
Average monthly benefit	\$ 167	\$ 373	(1)	\$ 836	(2)	\$ 1,335
Average final average salary	\$ 1,519	\$ 1,644	(1)	\$ 2,115	(2)	\$ 2,530
Number of retirees	222	324	(1)	335	(2)	58
2001-2002						
Average monthly benefit	\$ 147	\$ 345	(1)	\$ 827	(2)	\$ 1,150
Average final average salary	\$ 1,382	\$ 1,645	(1)	\$ 2,102	(2)	\$ 2,300
Number of retirees	230	371	(1)	354	(2)	84
2000-2001						
Average monthly benefit	\$ 141	\$ 310	(1)	\$ 685	(2)	\$ 876
Average final average salary	\$ 1,363	\$ 1,524	(1)	\$ 1,894	(2)	\$ 1,853
Number of retirees	217	374	(1)	306	(2)	67
1999-2000						
Average monthly benefit	\$ 120	\$ 1,128	(1)	\$ 594	(2)	\$ 3,514
Average final average salary	\$ 1,188	\$ 3,310	(1)	\$ 1,735	(2)	\$ 4,447
Number of retirees	213	218	(1)	307	(2)	912

Prior year data is not available in five-year service increments. Chart will be updated as data becomes available.

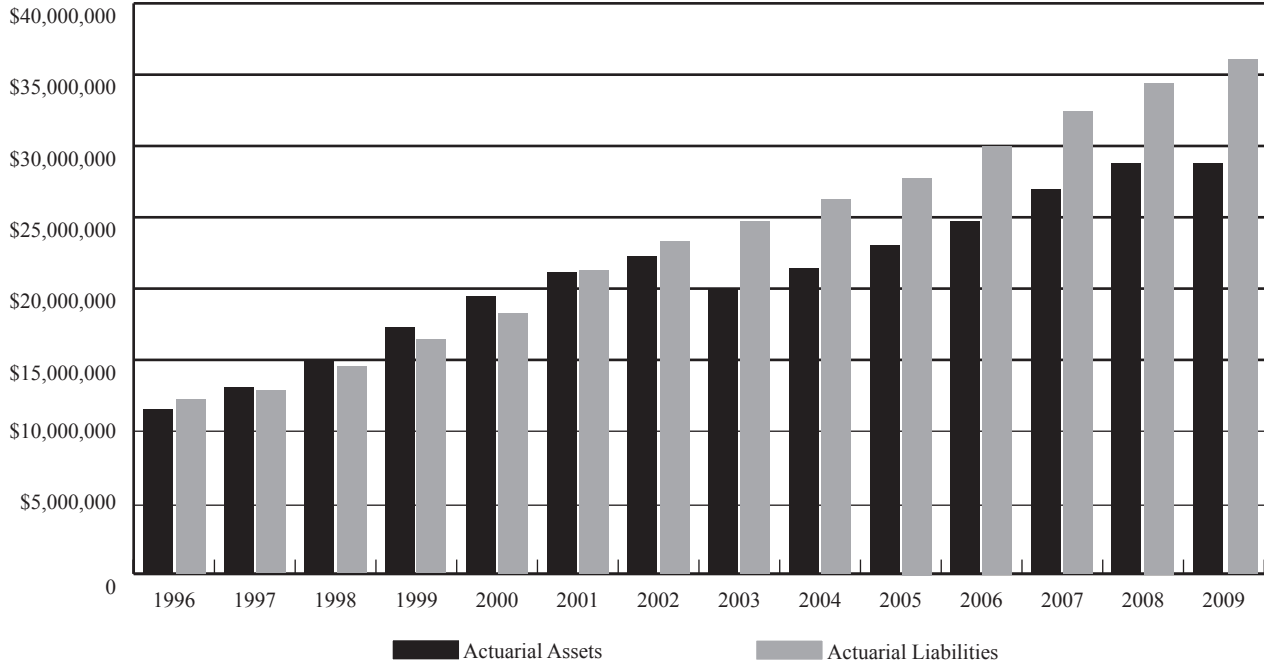
(1) Column to the left covers those with 10 to 19.9 years of service.

(2) Column to the left covers those with 20 to 29.9 years of service.

COMPARISONS OF ACTUARIAL ASSETS AND TOTAL ACTUARIAL LIABILITIES

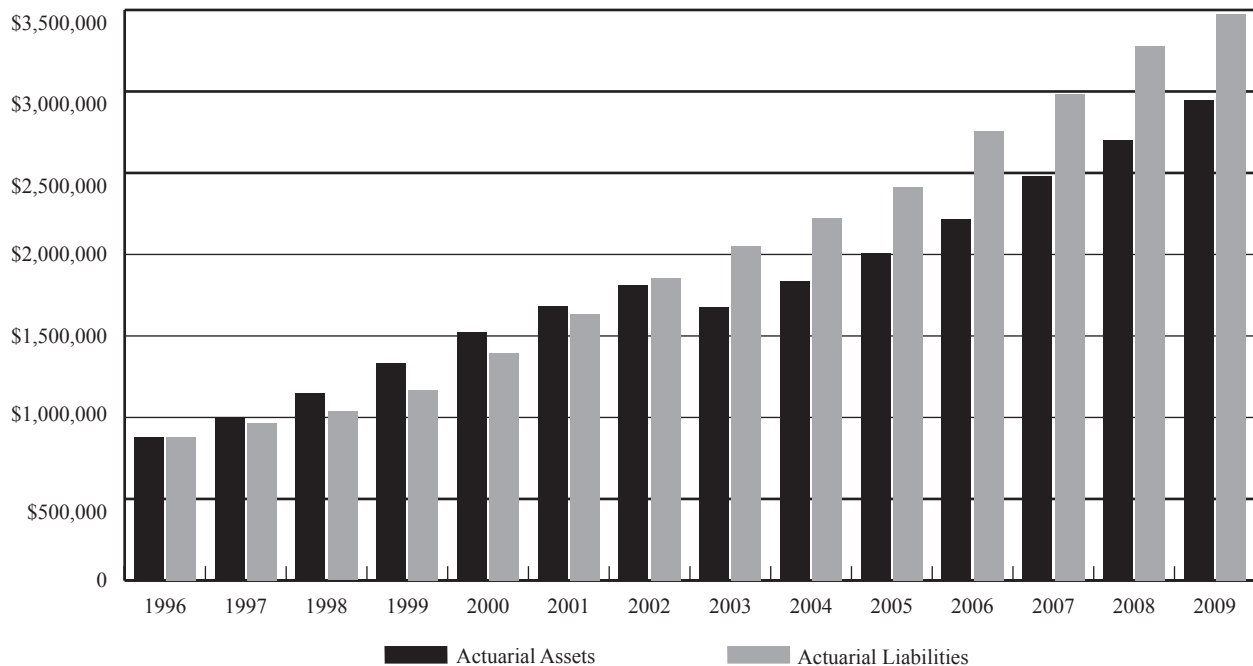
PSRS

(Dollar amounts in thousands)



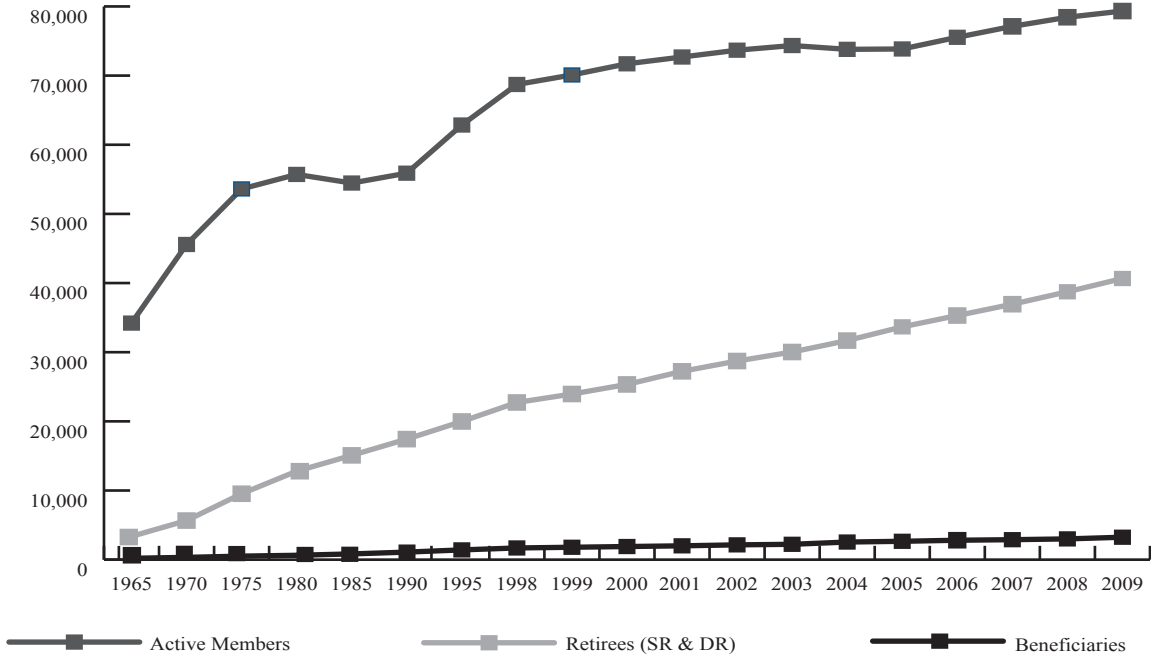
PEERS

(Dollar amounts in thousands)

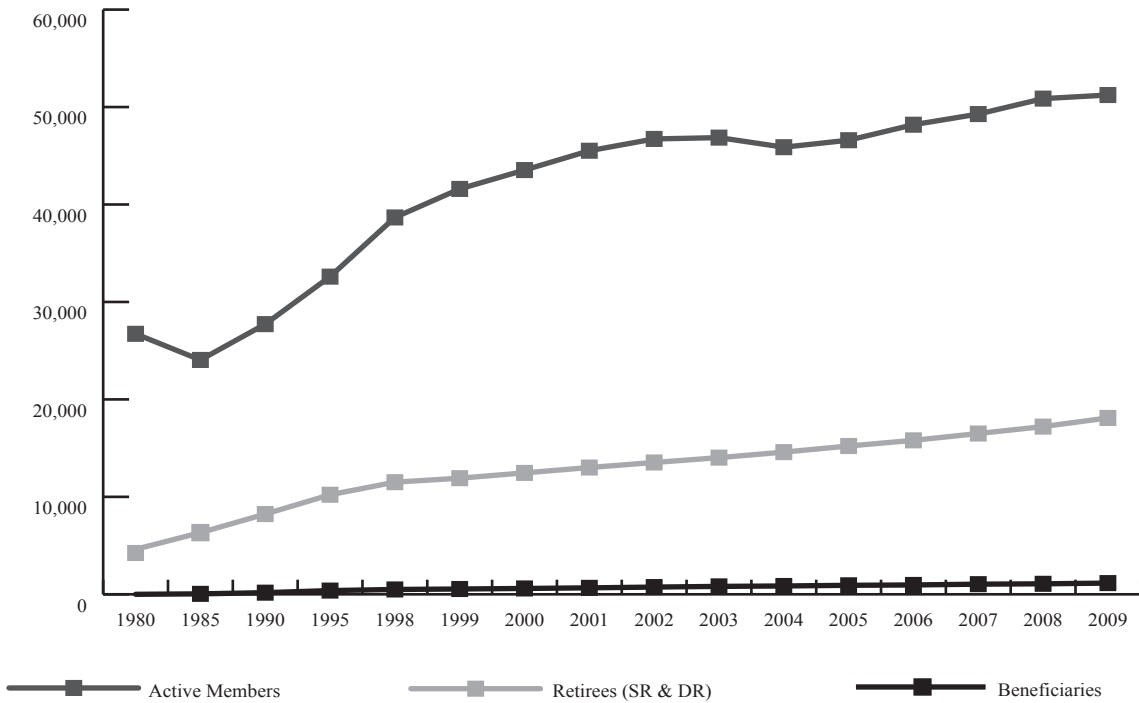


GROWTH IN MEMBERSHIP

PSRS



PEERS



PSRS SCHEDULE OF COVERED EMPLOYEES FOR THE 10 YEARS ENDED JUNE 30, 2009

District	2009		2008	
	Covered Employees	Percentage of Total	Covered Employees	Percentage of Total
Special School District - St. Louis	2,931	4%	2,913	4%
Springfield R-XII Schools	2,089	3%	2,037	3%
Rockwood R-VI Schools	1,893	2%	1,773	2%
Columbia Public Schools	1,594	2%	1,626	2%
Parkway C-2 Schools	1,656	2%	1,589	2%
North Kansas City Schools	1,497	2%	1,517	2%
Hazelwood R-I Schools	1,578	2%	1,639	2%
Francis Howell R-III Schools	1,462	2%	1,468	2%
Ft. Zumwalt R-II Schools	1,441	2%	1,395	2%
Lee's Summit R-VII Schools	1,358	2%	1,337	2%
All Others	63,490	77%	62,964	77%
Total - 541 Employers	80,989	100%	80,258	100%

District	2007		2006	
	Covered Employees	Percentage of Total	Covered Employees	Percentage of Total
Special School District - St. Louis	2,861	4%	2,809	4%
Springfield R-XII Schools	2,031	3%	1,983	3%
Rockwood R-VI Schools	1,751	2%	1,724	2%
Columbia Public Schools	1,560	2%	1,533	2%
Parkway C-2 Schools	1,520	2%	1,522	2%
North Kansas City Schools	1,483	2%	1,450	2%
Hazelwood R-I Schools	1,481	2%	1,461	2%
Francis Howell R-III Schools	1,459	2%	1,444	2%
Ft. Zumwalt R-II Schools	1,351	2%	1,340	2%
Lee's Summit R-VII Schools	1,285	2%	1,262	2%
All Others	61,939	77%	60,766	77%
Total - 543 Employers during 2008 and 545 Employers during 2007	78,721	100%	77,294	100%

District	2005		2004	
	Covered Employees	Percentage of Total	Covered Employees	Percentage of Total
Special School District - St. Louis	2,771	4%	2,799	4%
Springfield R-XII Schools	1,914	3%	1,902	2%
Rockwood R-VI Schools	1,690	2%	1,768	2%
Columbia Public Schools	1,490	2%	1,500	2%
Parkway C-2 Schools	1,575	2%	1,700	2%
North Kansas City Schools	1,430	2%	1,494	2%
Hazelwood R-I Schools	1,486	2%	1,451	2%
Francis Howell R-III Schools	1,397	2%	1,464	2%
Ft. Zumwalt R-II Schools	1,270	2%	1,259	2%
Lee's Summit R-VII Schools	1,179	2%	1,178	2%
All Others	59,427	77%	60,407	78%
Total - 545 Employers	75,629	100%	76,922	100%

PSRS SCHEDULE OF COVERED EMPLOYEES FOR THE 10 YEARS ENDED
JUNE 30, 2009

District	2003		2002	
	Covered Employees	Percentage of Total	Covered Employees	Percentage of Total
Special School District - St. Louis	2,647	3%	2,468	3%
Springfield R-XII Schools	1,957	3%	1,980	3%
Rockwood R-VI Schools	1,679	2%	1,564	2%
Columbia Public Schools	1,510	2%	1,479	2%
Parkway C-2 Schools	1,706	2%	1,832	2%
North Kansas City Schools	1,489	2%	1,436	2%
Hazelwood R-I Schools	1,536	2%	1,474	2%
Francis Howell R-III Schools	1,461	2%	1,419	2%
Ft. Zumwalt R-II Schools	1,264	2%	1,194	2%
Lee's Summit R-VII Schools	1,186	2%	1,084	1%
All Others	60,817	78%	59,663	79%
Total - 545 Employers	77,252	100%	75,593	100%

District	2001		2000	
	Covered Employees	Percentage of Total	Covered Employees	Percentage of Total
Special School District - St. Louis	2,454	3%	2,435	3%
Springfield R-XII Schools	1,880	3%	1,877	3%
Rockwood R-VI Schools	1,492	2%	1,447	2%
Columbia Public Schools	1,444	2%	1,382	2%
Parkway C-2 Schools	1,738	2%	1,729	2%
North Kansas City Schools	1,436	2%	1,394	2%
Hazelwood R-I Schools	1,474	2%	1,425	2%
Francis Howell R-III Schools	1,375	2%	1,444	2%
Ft. Zumwalt R-II Schools	1,187	2%	1,150	2%
Lee's Summit R-VII Schools	1,025	1%	972	1%
All Others	58,728	79%	57,599	79%
Total - 545 Employers	74,233	100%	72,854	100%

PEERS SCHEDULE OF COVERED EMPLOYEES FOR THE 10 YEARS ENDED JUNE 30, 2009

District	2009		2008	
	Covered Employees	Percentage of Total	Covered Employees	Percentage of Total
Special School District - St. Louis	2,685	5%	2,619	5%
Springfield R-XII Schools	1,463	3%	1,464	3%
Rockwood R-VI Schools	1,248	3%	1,241	3%
Lee's Summit R-VII Schools	1,203	2%	1,203	2%
North Kansas City Schools	1,266	2%	1,213	2%
Parkway C-2 Schools	1,102	2%	1,106	2%
Ft. Zumwalt R-II Schools	1,129	2%	1,131	2%
Columbia Public Schools	950	2%	1,026	2%
Independence Public Schools	1,167	2%	1,058	2%
Hazelwood R-I Schools	995	2%	1,017	2%
All Others	39,754	75%	39,715	75%
Total - 535 Employers	52,962	100%	52,793	100%

District	2007		2006	
	Covered Employees	Percentage of Total	Covered Employees	Percentage of Total
Special School District - St. Louis	2,514	5%	2,483	5%
Springfield R-XII Schools	1,418	3%	1,374	3%
Rockwood R-VI Schools	1,200	2%	1,177	2%
Lee's Summit R-VII Schools	1,167	2%	1,138	2%
North Kansas City Schools	1,158	2%	1,144	2%
Parkway C-2 Schools	1,101	2%	1,120	2%
Ft. Zumwalt R-II Schools	1,051	2%	1,023	2%
Columbia Public Schools	1,008	2%	992	2%
Independence Public Schools	978	2%	920	2%
Hazelwood R-I Schools	931	2%	914	2%
All Others	38,903	76%	37,874	76%
Total - 536 Employers	51,429	100%	50,159	100%

District	2005		2004	
	Covered Employees	Percentage of Total	Covered Employees	Percentage of Total
Special School District - St. Louis	2,467	5%	2,129	4%
Springfield R-XII Schools	1,328	3%	1,333	3%
Rockwood R-VI Schools	1,213	2%	1,230	3%
Lee's Summit R-VII Schools	1,072	2%	984	2%
North Kansas City Schools	1,117	2%	1,132	2%
Parkway C-2 Schools	1,070	2%	1,145	2%
Ft. Zumwalt R-II Schools	968	2%	952	2%
Columbia Public Schools	957	2%	942	2%
Independence Public Schools	910	2%	939	2%
Hazelwood R-I Schools	912	2%	907	2%
All Others	36,634	76%	36,473	76%
Total - 536 Employers	48,648	100%	48,166	100%

PEERS SCHEDULE OF COVERED EMPLOYEES FOR THE 10 YEARS ENDED
JUNE 30, 2009

District	2003		2002	
	Covered Employees	Percentage of Total	Covered Employees	Percentage of Total
Special School District - St. Louis	2,044	4%	1,833	4%
Springfield R-XII Schools	1,326	3%	1,407	3%
Rockwood R-VI Schools	1,244	3%	1,148	2%
Lee's Summit R-VII Schools	983	2%	933	2%
North Kansas City Schools	1,163	2%	1,081	2%
Parkway C-2 Schools	1,199	2%	1,278	3%
Ft. Zumwalt R-II Schools	955	2%	668	1%
Columbia Public Schools	954	2%	983	2%
Independence Public Schools	899	2%	1,062	2%
Hazelwood R-I Schools	963	2%	970	2%
All Others	37,371	76%	36,399	77%
Total - 536 Employers	49,101	100%	47,762	100%

District	2001		2000	
	Covered Employees	Percentage of Total	Covered Employees	Percentage of Total
Special School District - St. Louis	1,833	4%	1,941	4%
Springfield R-XII Schools	1,407	3%	1,336	3%
Rockwood R-VI Schools	1,148	2%	1,164	3%
Lee's Summit R-VII Schools	933	2%	857	2%
North Kansas City Schools	1,084	2%	1,070	2%
Parkway C-2 Schools	1,278	3%	1,264	3%
Ft. Zumwalt R-II Schools	668	1%	623	1%
Columbia Public Schools	983	2%	898	2%
Independence Public Schools	1,068	2%	1,099	2%
Hazelwood R-I Schools	970	2%	958	2%
All Others	36,400	77%	34,963	76%
Total - 536 Employers	47,772	100%	46,173	100%

CONTACT INFORMATION

**For more information on
The Public School Retirement System of Missouri and/or
The Public Education Employee Retirement System of
Missouri, write or call:**

P.O. Box 268
Jefferson City, MO 65102
Toll Free: (800) 392-6848
Fax: (573) 634-5375
Email: psrspeers@psrspeers.org

Web site: www.psr-peers.org

Comprehensive Annual Financial Report for the Year Ended June 30, 2009