

PSRS/PEERS  
FIRST FLOOR SUITE

3210 West Truman Blvd., Jefferson City, MO 65109

ISSUE FOR: BID  
JULY 30, 2025

ARCHITECT:

**soa**  
ARCHITECTURE

2801 Woodard Drive, 103  
Columbia, MO 65202  
phone: 573.443.1407

MEP ENGINEER:

**Timberlake**  
ENGINEERING  
A Custom Engineering Company

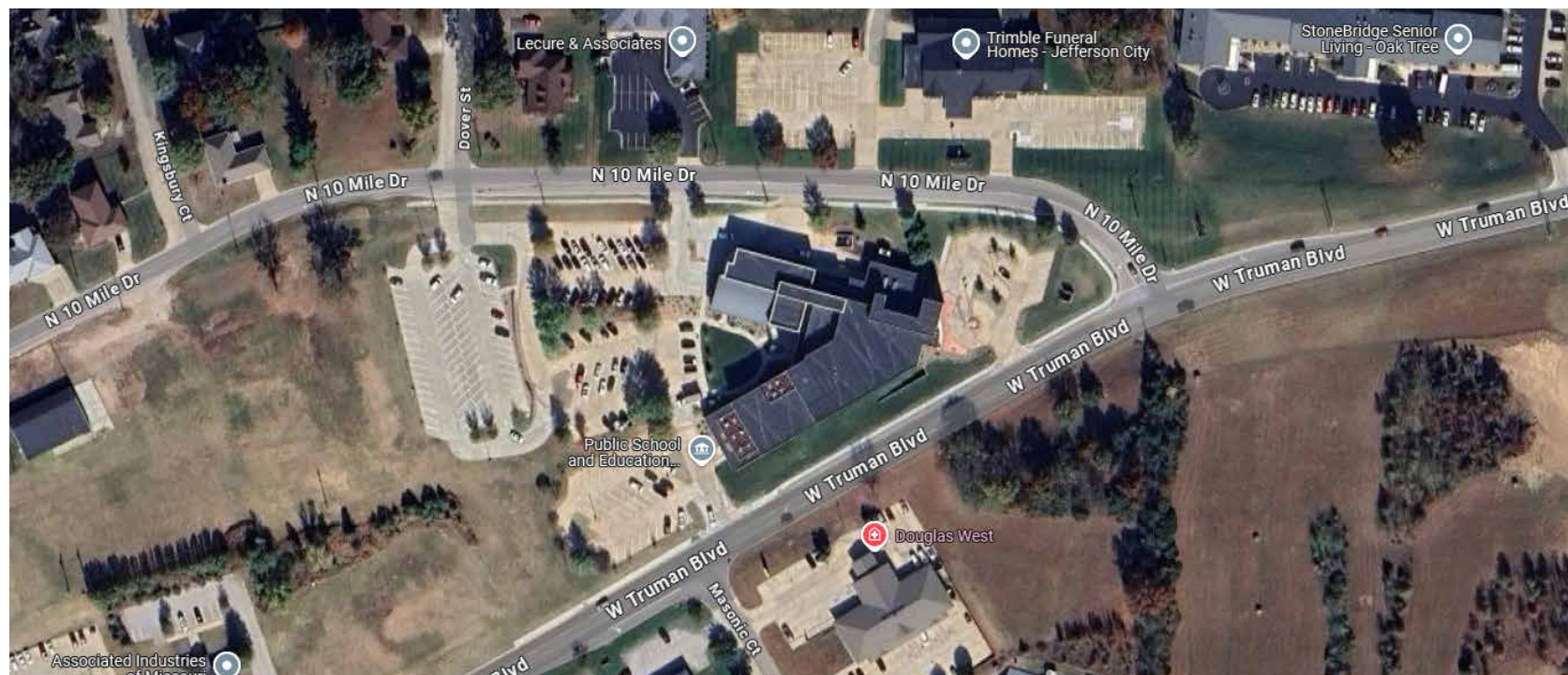
912 Old 63 South  
Columbia, MO 65201  
phone: 573.875.4365

SHEET LIST - SUITE

GENERAL  
G001 COVER & CODE

ARCHITECTURAL  
A201 DEMO AND NEW WORK PLANS  
A701 SCHEDULES

MECHANICAL \ ELECTRICAL \ PLUMBING  
M301 LOWER LEVEL RENOVATION MECHANICAL PLANS  
E201 LOWER LEVEL RENOVATION POWER PLAN  
E202 LOWER LEVEL RENOVATION LIGHTING PLAN



**02** LOCATION PLAN  
G001 1" = 200'-0"

CODE & ZONING INFORMATION

APPLICABLE CODES:  
2018 INTERNATIONAL EXISTING BUILDING CODE  
2018 INTERNATIONAL MECHANICAL CODE  
2018 INTERNATIONAL PLUMBING CODE  
2017 NATIONAL ELECTRICAL CODE  
2018 INTERNATIONAL FIRE CODE  
2010 AMERICANS WITH DISABILITIES ACT - STANDARDS FOR ACCESSIBLE DESIGN

ZONING: CITY OF JEFFERSON CITY, C-O AND PUD  
USE GROUP: MIXED USE, B (BUSINESS), A (ASSEMBLY), S-2 (PARKING GARAGE), NON-SEPARATED OCCUPANCY  
CONSTRUCTION TYPE: 2B, FULLY SPRINKLERED.  
STORIES ABOVE GRADE: 3

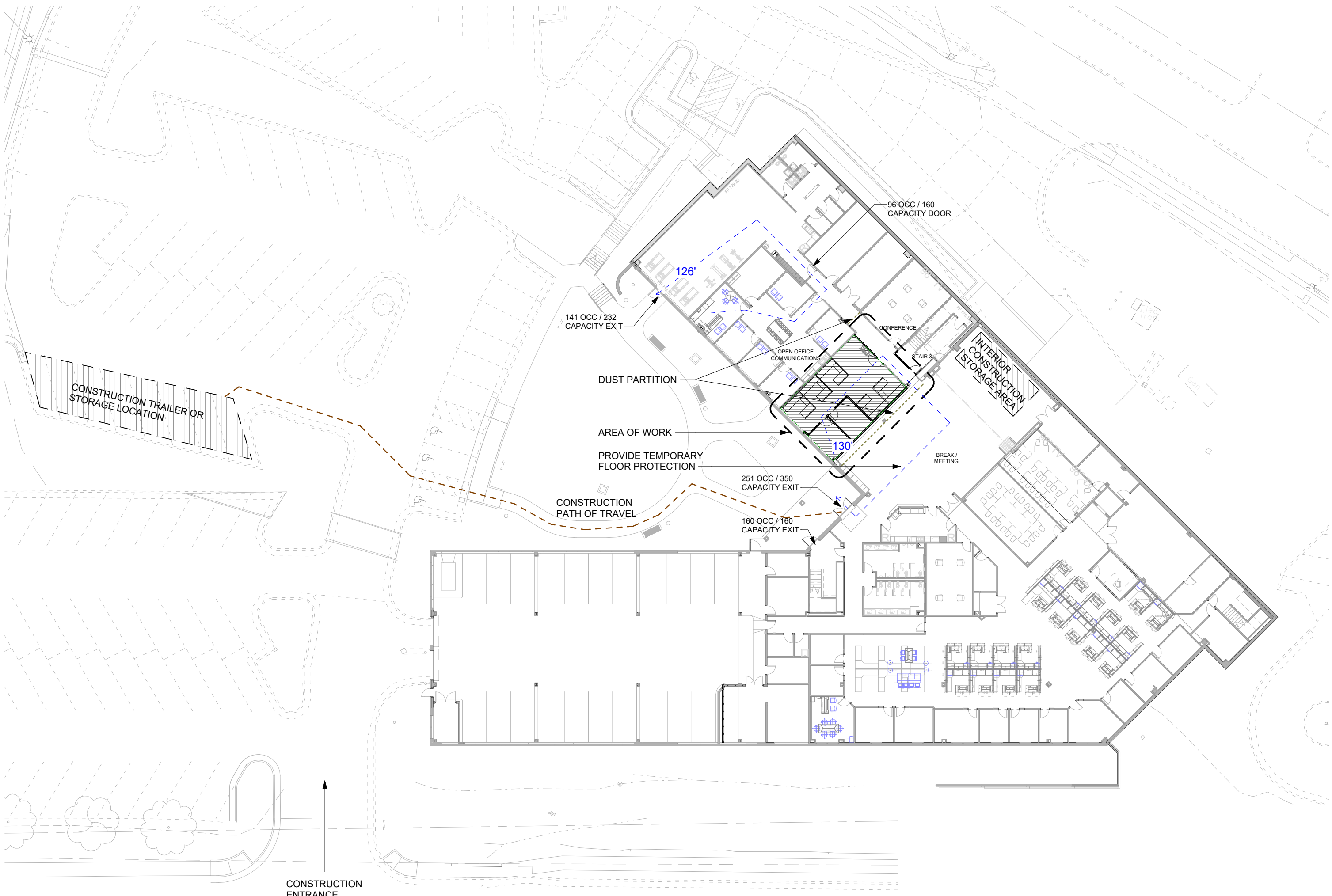
TOTAL BUILDING AREA:  
OVERALL LOWER LEVEL FOOTPRINT: 32,166 SF  
RENOVATED AREA: 1,200 SF  
LOWER LEVEL SUITE: 955 SF

SUITE OCCUPANTS = 7  
LOWER LEVEL OVERALL OCCUPANCY WILL BE LESS (LESS ASSEMBLY SPACE)  
LOWER LEVEL OVERALL OCCUPANCY WAS 463 (NOT INCLUDING PARKING GARAGE)  
NOW THAT SAME FOOTPRINT HAS OCCUPANCY OF 374  
PLUMBING FIXTURE REQUIREMENTS WILL BE LESS  
PLUMBING FIXTURE COUNTS IS UNCHANGED

BUILDING FINISH FLOOR ELEVATION: EL = 100'-0" EQUALS SITE ELEVATION 729.93'

FIRE SPRINKLER: FULLY SPRINKLERED  
EMERGENCY LIGHTING AND POWER: EXIT LIGHTING WITH BATTERY PACK LIGHTING  
FIRE ALARMS: AS LOCATED ON PLANS  
FIRE EXTINGUISHERS THROUGHOUT: NFPA 10, IFC-906, AS LOCATED ON PLANS

ALLOWABLE COMMON PATH OF TRAVEL: 100'  
ALLOWABLE TRAVEL DISTANCE: 300'



**01** LOWER LEVEL CONSTRUCTION LOGISTICS PLAN  
G001 1" = 30'-0"



Nicholas Bryon Borgmeyer - Architect  
License No. A-2025015734



Architecture  
Interior Design  
Planning  
Sustainability  
2801 Woodard Drive, Suite 103  
Columbia, MO 65202  
573.443.1407  
[www.soa-inc.com](http://www.soa-inc.com)

Missouri Certificate of  
Authority Number: 000826

MEP ENGINEER:

**Timberlake**  
ENGINEERING  
A Custom Engineering Company

912 OLD 63 SOUTH  
COLUMBIA, MO 65201  
573.875.4365

PSRS/PEERS  
FIRST FLOOR SUITE  
3210 West Truman Blvd., Jefferson City, MO 65109

AHJ APPROVAL STAMP

ISSUE FOR BID	
JULY 30, 2025	
REVISION	DATE

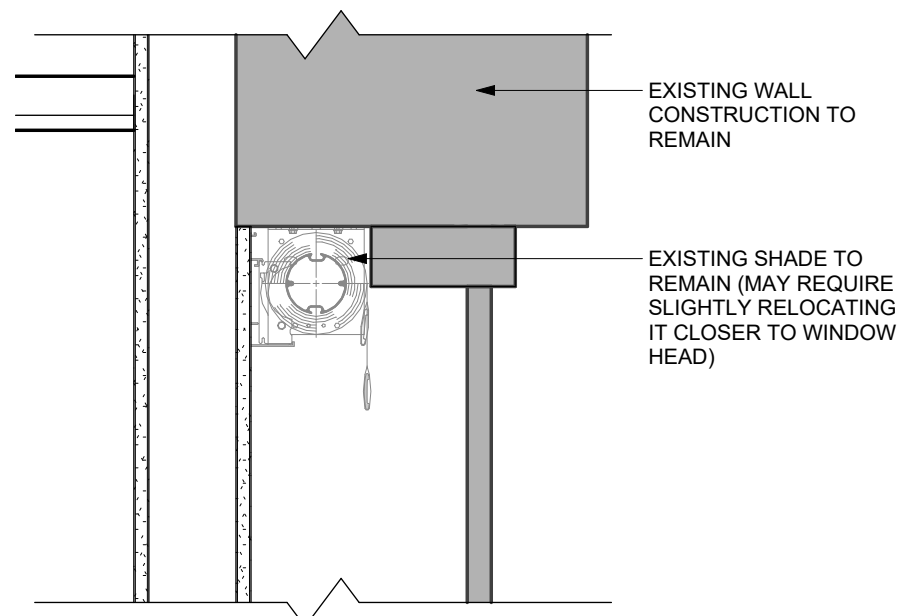
COVER & CODE

G001

SOA PROJECT 24064

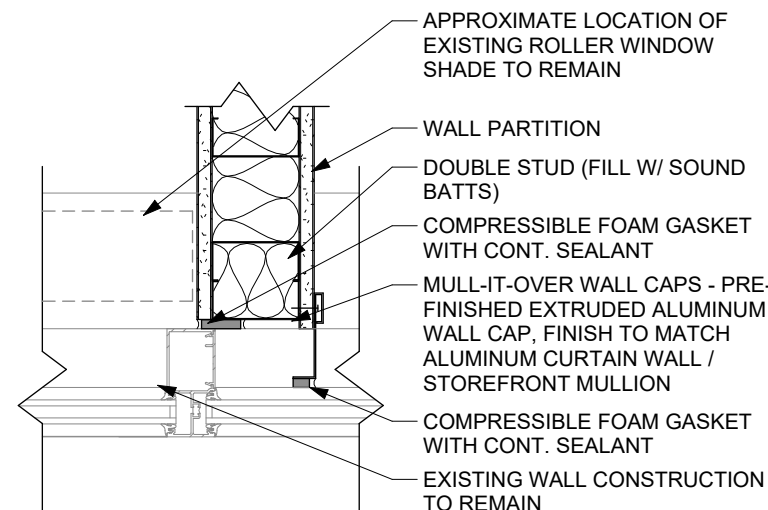
If you must print this drawing, please  
recycle





**06 DTL @ SHADE WALL**

A201 1 1/2" = 1'-0"



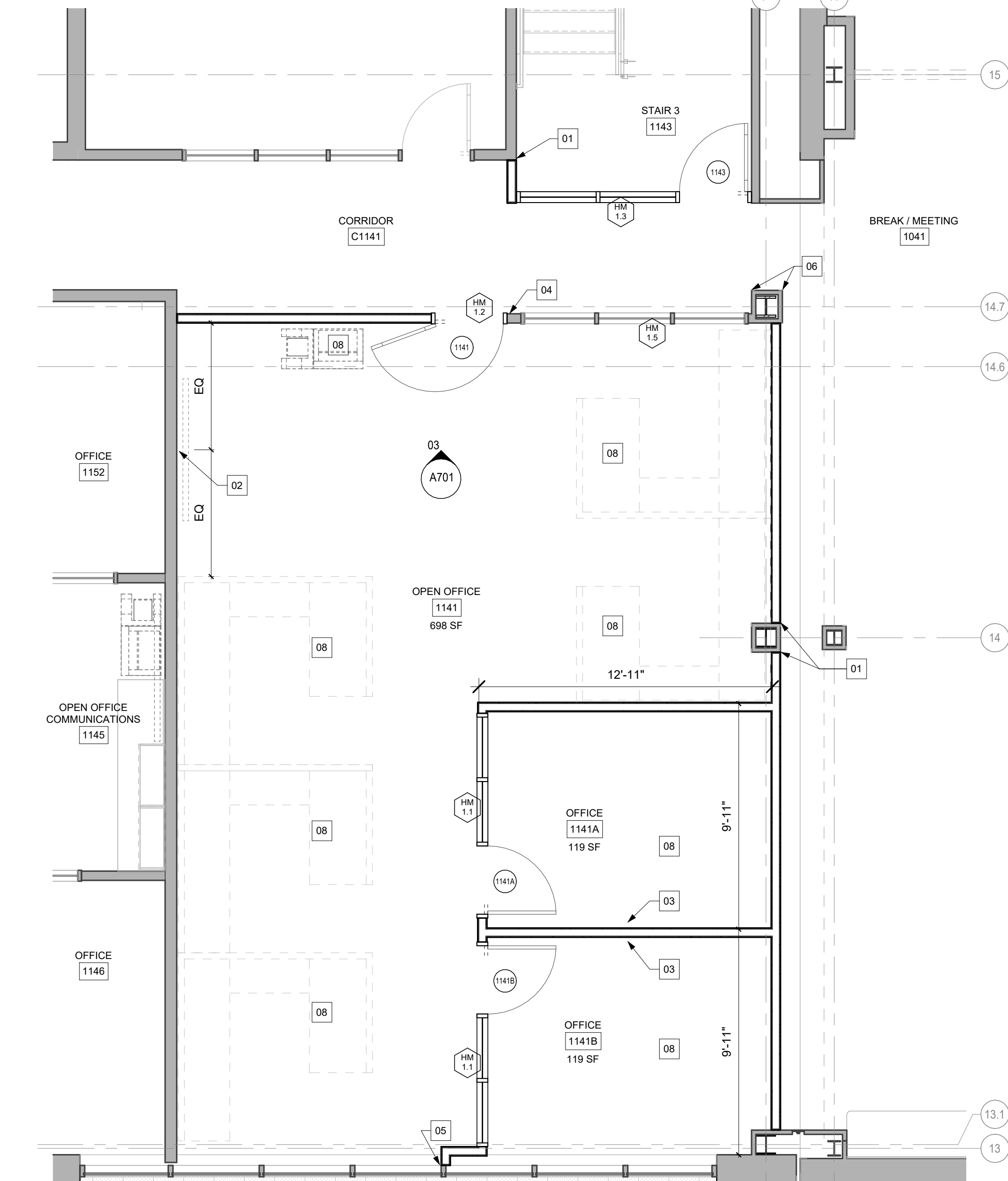
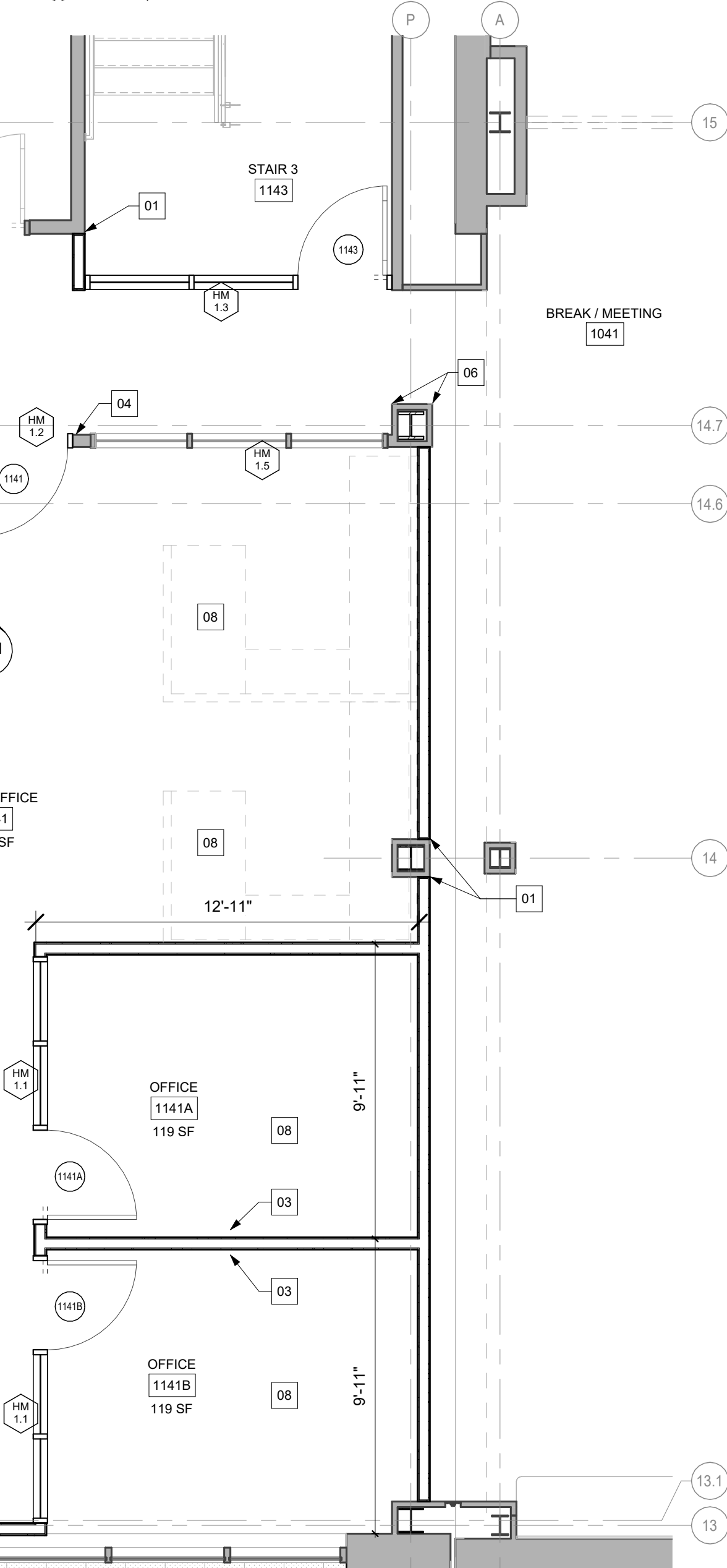
**05 DTL - WALL TO MULLION**

A201 1 1/2" = 1'-0"



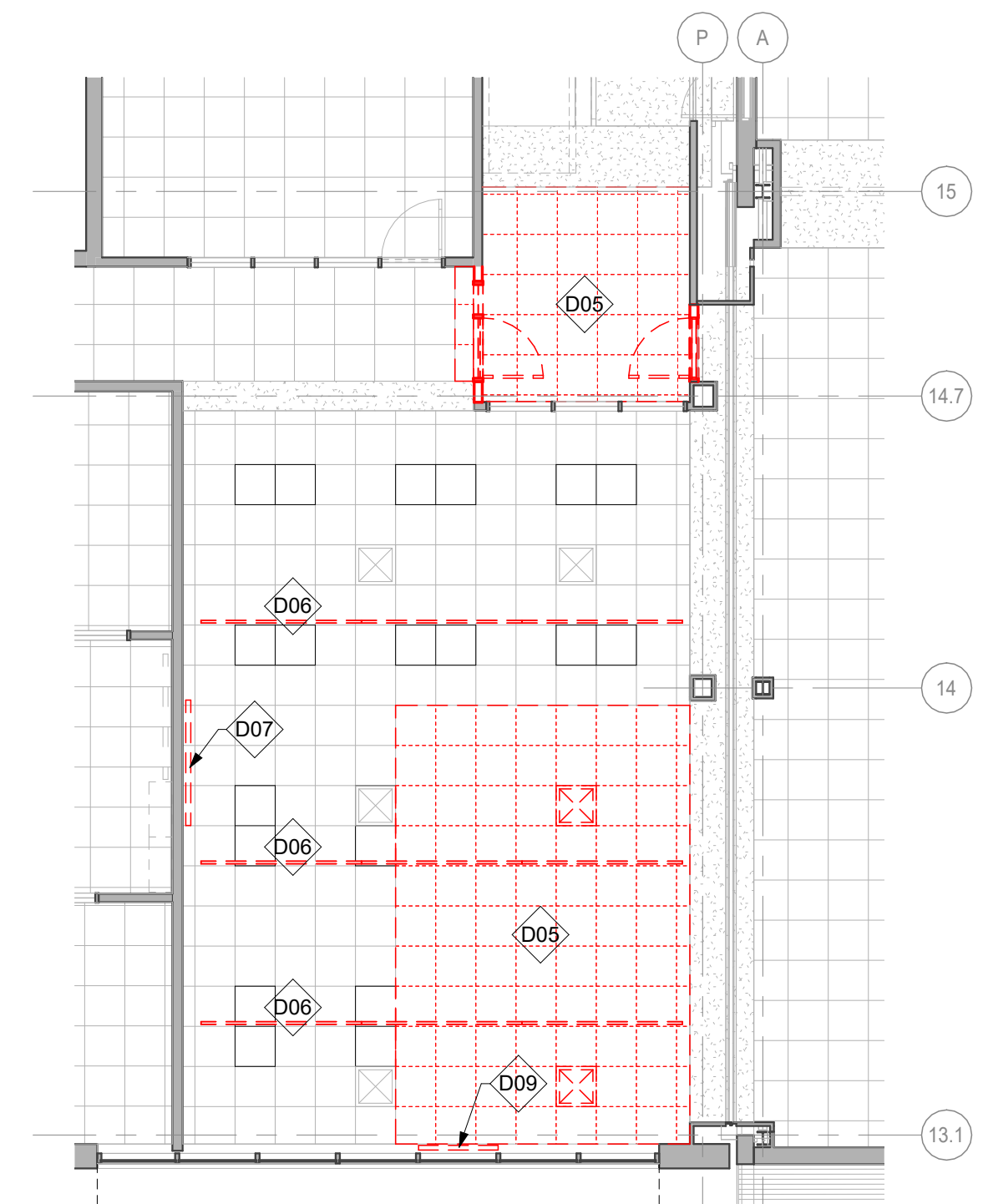
**04 LOWER LEVEL SUITE - RCP**

A201 1/8" = 1'-0"



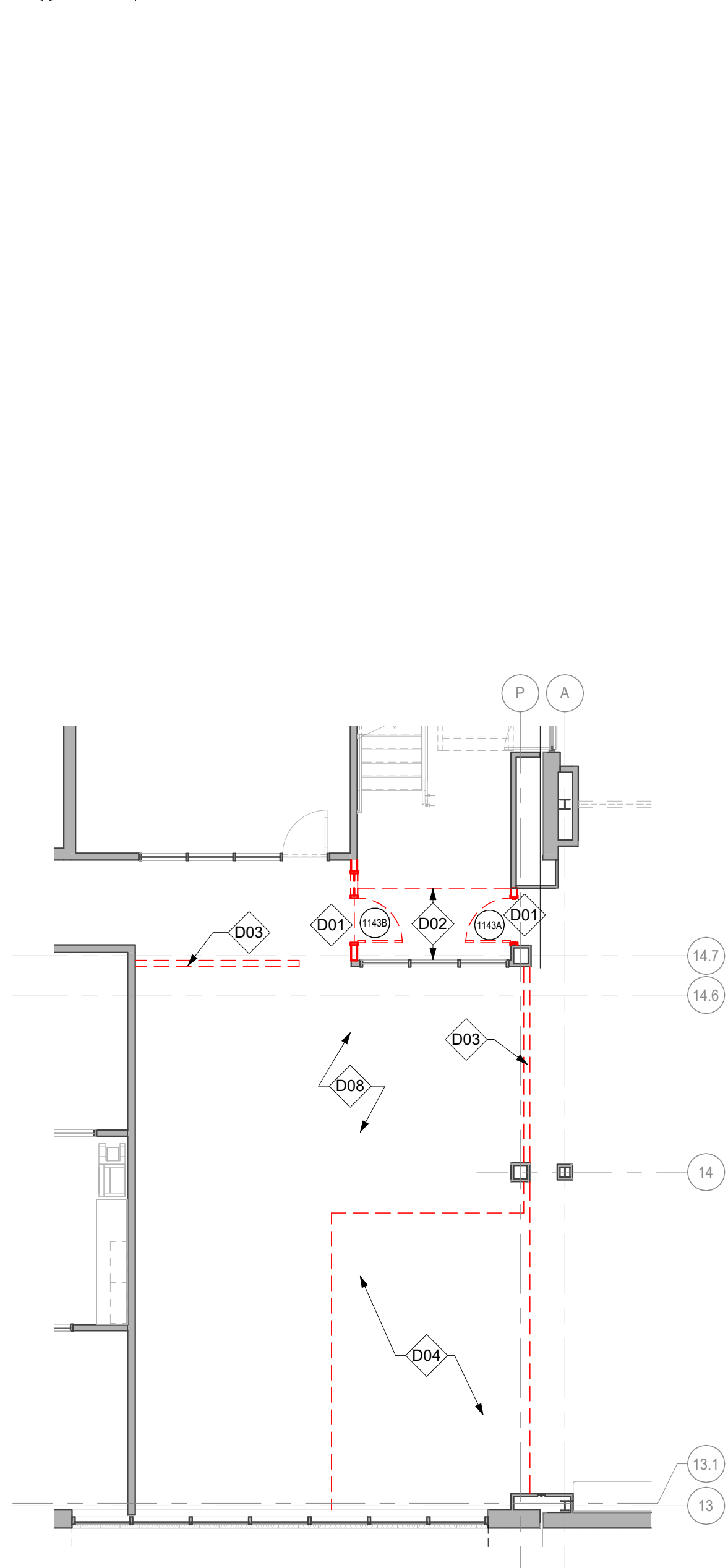
**02 LOWER LEVEL SUITE - NEW WORK PLAN**

A201 1/4" = 1'-0"



**03 LOWER LEVEL SUITE - DEMO RCP**

A201 1/8" = 1'-0"

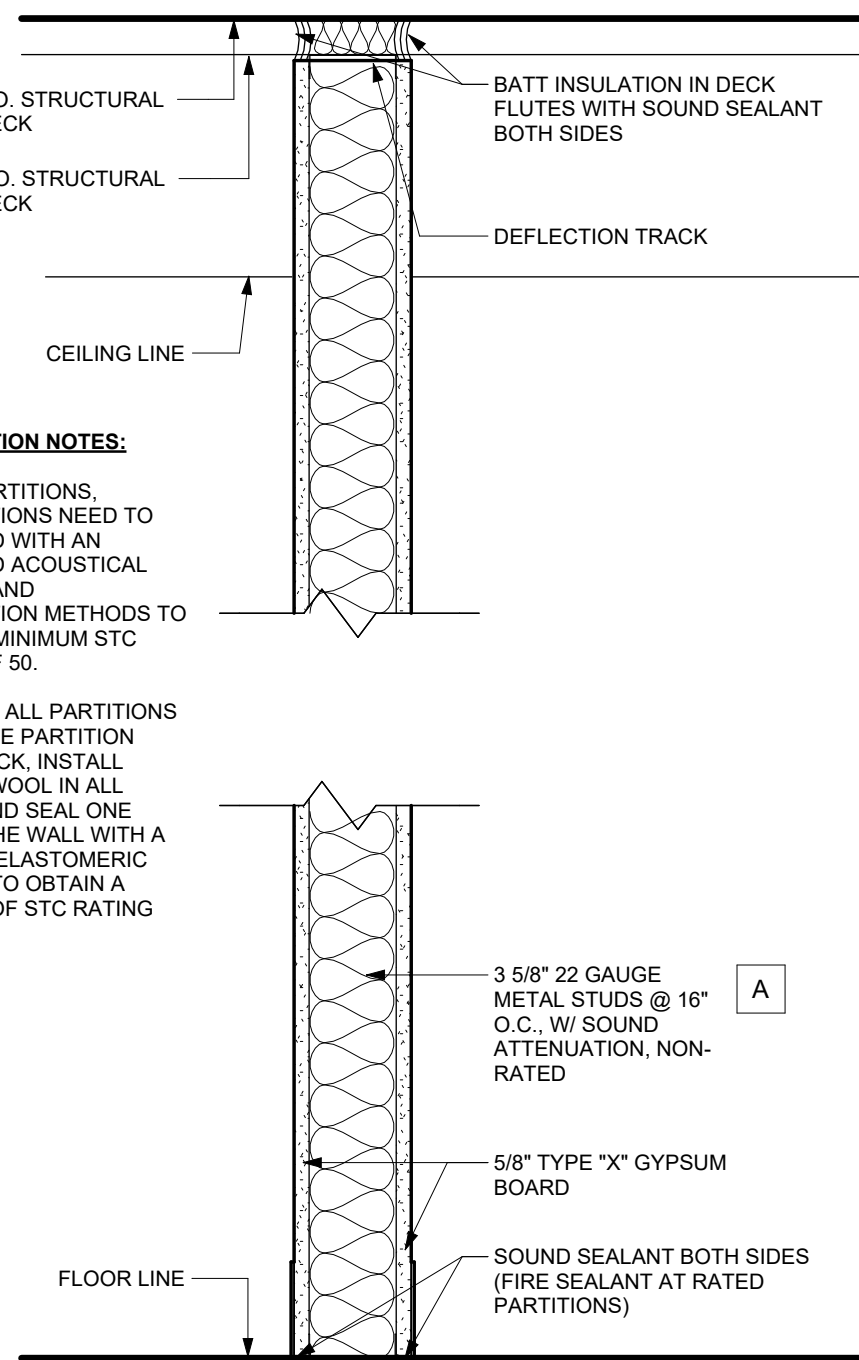


**01 LOWER LEVEL SUITE - DEMO PLAN**

A201 1/8" = 1'-0"

**GENERAL PARTITION NOTES:**

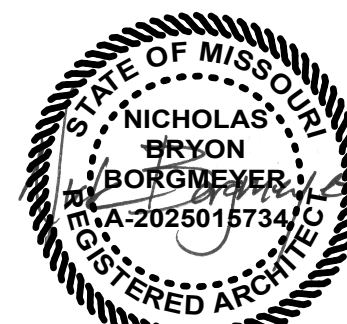
- AT ALL PARTITIONS, PENETRATIONS NEED TO BE SEALED WITH AN APPROVED ACOUSTICAL SEALANT AND INSTALLATION METHODS TO OBTAIN A MINIMUM STC RATING OF 50.
- AT TOP OF ALL PARTITIONS WHERE THE PARTITION MEETS DECK, INSTALL MINERAL WOOL IN ALL FLUTES AND SEAL ONE SIDE OF THE WALL WITH A SPRAYED ELASTOMERIC SEALANT TO OBTAIN A MINIMUM OF STC RATING OF 50.



**PARTITION TYPES**

1 1/2" = 1'-0"

7/30/2025 4:46:54 PM



Nicholas Bryon Borgmeyer - Architect  
License No. A-2025015734



Architecture  
Interior Design  
Planning  
Sustainability  
2801 Woodard Drive, Suite 103  
Columbia, MO 65202  
573.443.1407  
[www.soa-inc.com](http://www.soa-inc.com)

Missouri Certificate of  
Authority Number: 000826

MEP ENGINEER:



912 OLD 63 SOUTH  
COLUMBIA, MO 65201  
573.875.4365

**PSRS/PEERS  
FIRST FLOOR SUITE**  
3210 West Truman Blvd., Jefferson City, MO 65109

AHJ APPROVAL STAMP

ISSUE FOR BID  
JULY 30, 2025

REVISION DATE

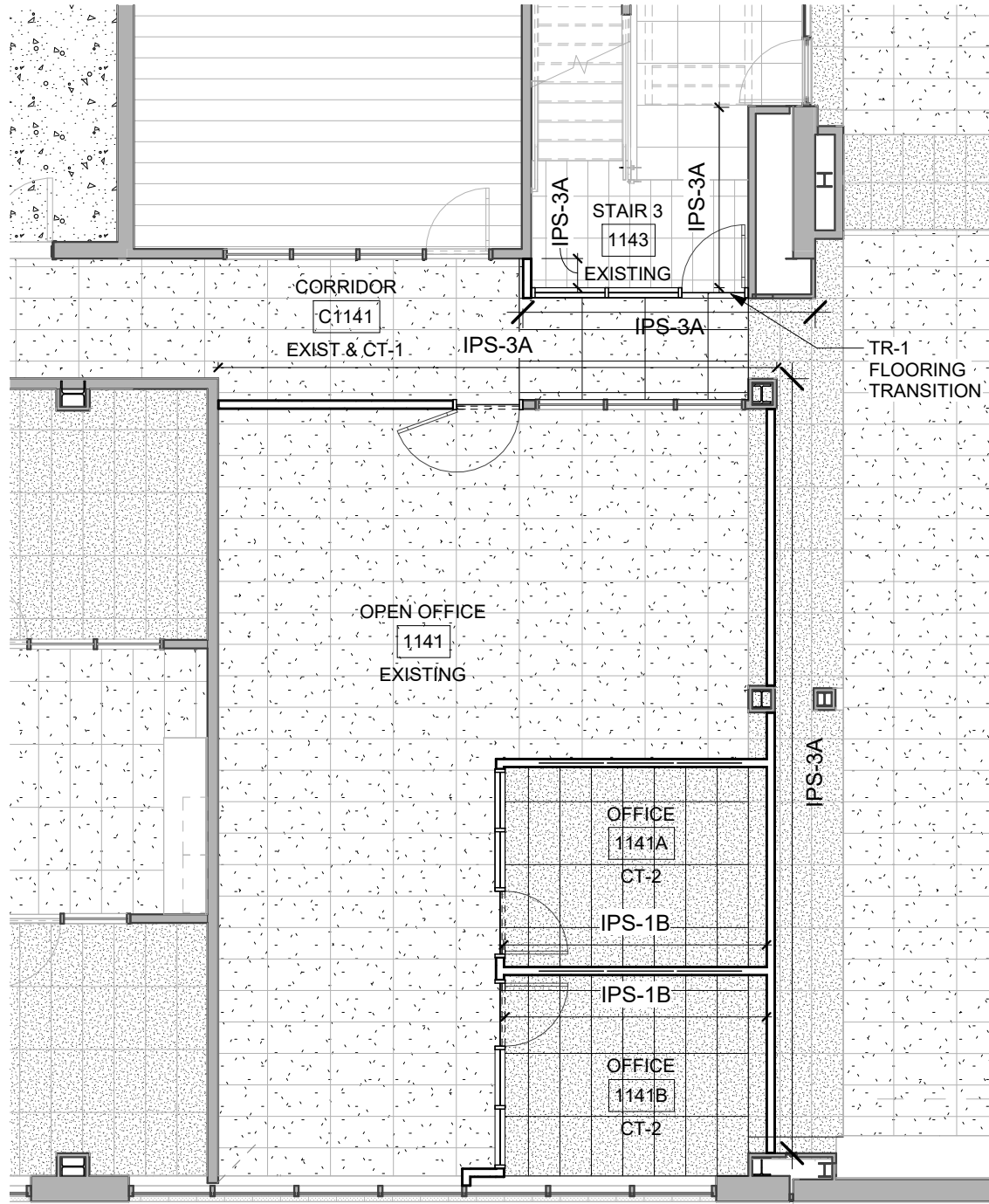
DEMO AND NEW WORK  
PLANS

**A201**

SOA PROJECT 24064

If you must print this drawing, please  
recycle





**04 LOWER LEVEL SUITE - FINISH FLR PLAN**  
A701 1/8" = 1'-0"

ROOM FINISH SCHEDULE - SUITE									
	ROOM NAME	FLOOR	BASE	WALLS				CEILING	NOTES
				NORTH	SOUTH	EAST	WEST	MATL	
1141	OPEN OFFICE	EXISTING	RB-1	IPS-3A	IPS-3A	IPS-3A	IPS-3A	EXISTING	
1141A	OFFICE	CT-2	RB-1	IPS-1A	IPS-1B	IPS-1A	IPS-1A	ACT-1	USE OWNER PROVIDED ATTIC STOCK CARPET TILE
1141B	OFFICE	CT-2	RB-1	IPS-1B	IPS-1A	IPS-1A	IPS-1A	ACT-1	USE OWNER PROVIDED ATTIC STOCK CARPET TILE
1143	STAIR 3	EXISTING	EXIST & RB-3	EXISTING	IPS-3A	EXIST & IPS-3A	EXIST & IPS-3A	EXISTING	
C1141	CORRIDOR	EXIST & CT-1	RB-1	IPS-3A	IPS-3A	IPS-3A	IPS-3A	ACT-1	USE OWNER PROVIDED ATTIC STOCK CARPET TILE

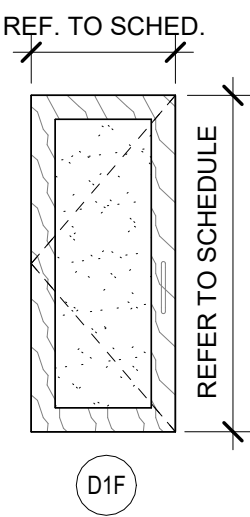
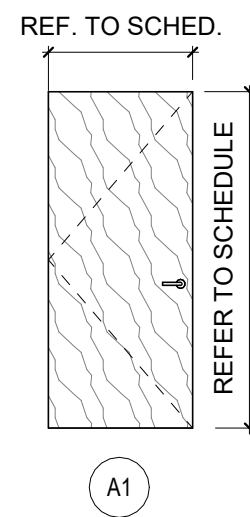
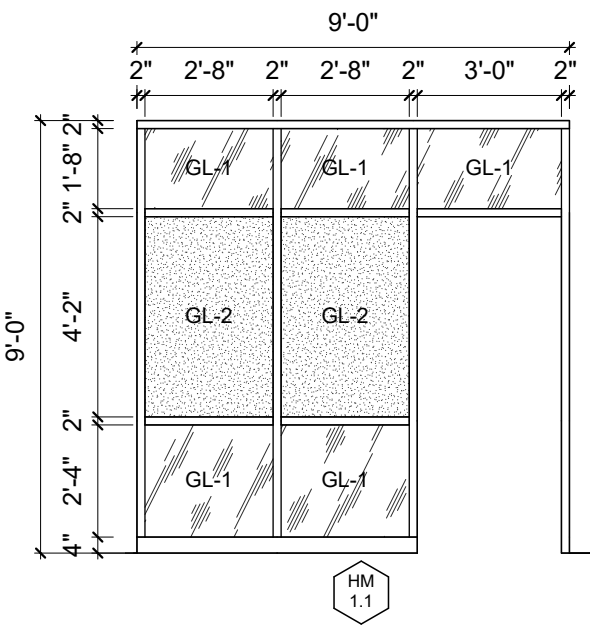
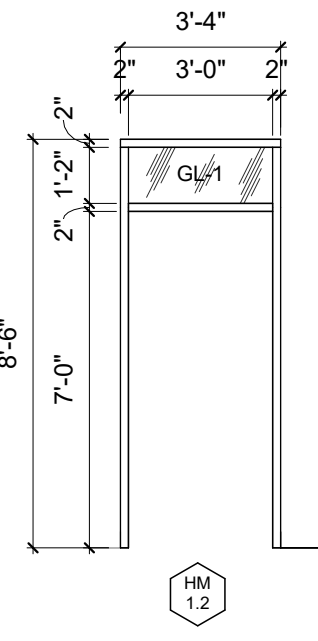
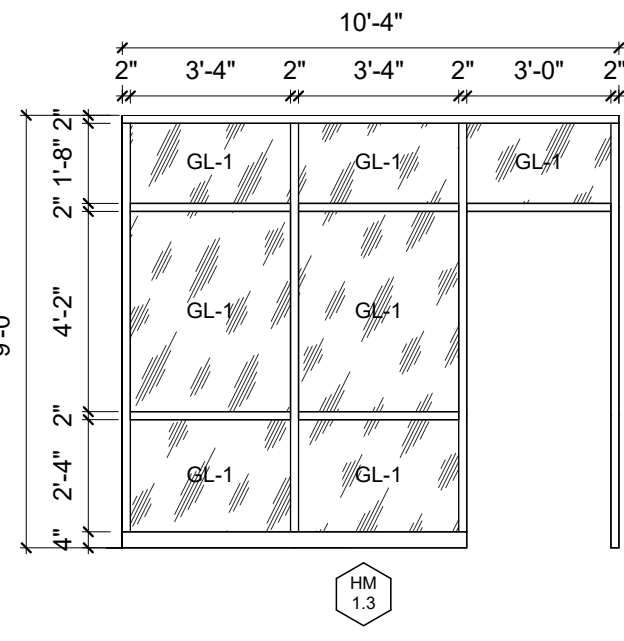
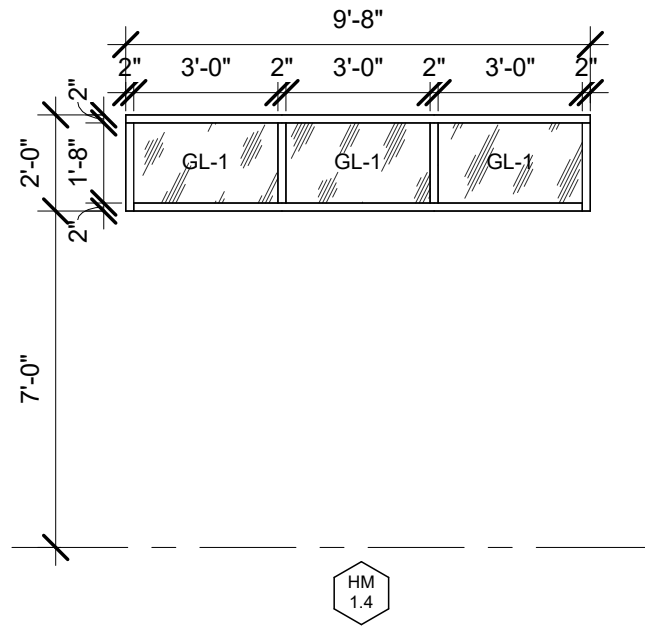
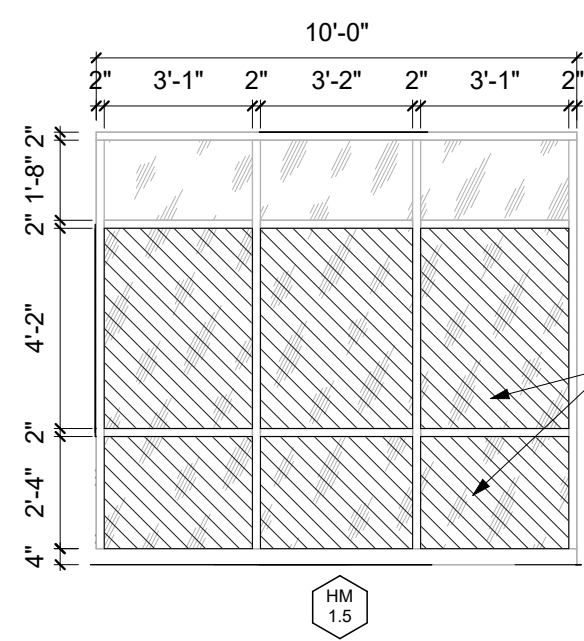
**FINISH SCHEDULE GENERAL NOTES:**

- G.1 REFER TO SPECIFICATIONS FOR ALL INTERIOR FINISH PRODUCT INFORMATION INCLUDING PATTERN, COLOR, STAIN, SIZE.
- G.2 HOLLOW METAL DOOR FRAMES TO BE PAINTED IPS-5A UNLESS NOTED OTHERWISE.
- G.3 REFER TO ROOM FINISH SCHEDULE FOR WALL BASE, FLOORING, FIELD AND ACCENT PAINT LOCATIONS.

**FINISH LEGEND GENERAL:**

- LVT- LUXURY VINYL TILE  
WCT- WALK-OFF CARPET TILE  
CT- CARPET TILE  
T- PORCELAIN FLOOR TILE  
SC- SEALED CONCRETE  
RB- RUBBER WALL BASE  
IPS-1 WALL PAINT, EGGSHELL LATEX  
IPS-3 WALL PAINT, SPECIALTY, HIGH PERFORMANCE OR EPOXY PAINT  
IPS-4 STAINED WOOD FINISH  
WT- WALL TILE  
WC- WALLCOVERING - VINYL  
AWP- ACOUSTICAL WALL PANEL  
AC- ACOUSTICAL CEILING  
IPS-2 CEILING PAINT, FLAT  
IPS-5 METAL DOOR FRAME PAINT, SEMI-GLOSS  
R- REVEAL  
TR- TRANSITION

DOOR AND FRAME SCHEDULE - SUITE												
DOOR						FRAME				FIRE RATING LABEL	HDWR SET NO	NOTES
NO.	SIZE			MATL	ELEV	MATL	ELEV	DETAIL				
	W	H	THK					HEAD	JAMB			
LOWER LEVEL												
1141	3'-0"	7'-0"	1 3/4"	SCWD	D1F	HM	HM 1.2	A701/02	A701/01		1	REUSE DOOR PANEL AND DOOR HARDWARE FROM SALVAGED OPENING 1143A
1141A	3'-0"	7'-0"	1 3/4"	SCWD	A1	HM	HM 1.1	A701/02	A701/01	-	2	
1141B	3'-0"	7'-0"	1 3/4"	SCWD	A1	HM	HM 1.1	A701/02	A701/01	-	2	
1143	3'-0"	7'-0"	1 3/4"	SCWD	D1F	HM	HM 1.3	A701/02	A701/01		3	



**FRAME TYPE ELEVATION NOTES**

- FIELD VERIFY ALL DIMENSIONS. IF DIMENSIONS VARY SIGNIFICANTLY NOTIFY THE ARCHITECT
- ALL OVERALL DIMENSIONS TO FACE OF NOMINAL OPENING. DIMENSIONS TO INTERIOR MULLIONS IDENTIFY MULLION CENTERLINE OR EDGE LOCATIONS TO BE MAINTAINED
- GL-\* INDICATES GLAZING TYPES, AS IDENTIFIED IN THE SPECIFICATIONS
- AT INTERIOR FRAME TYPES, EXTEND PARTITION ABOVE EACH FRAME TYPE TO STRUCTURAL DECK ABOVE, UNLESS NOTED OTHERWISE. IF NO PARTITION TYPE IS INDICATED IN PLAN, USE PARTITION TYPE "A"

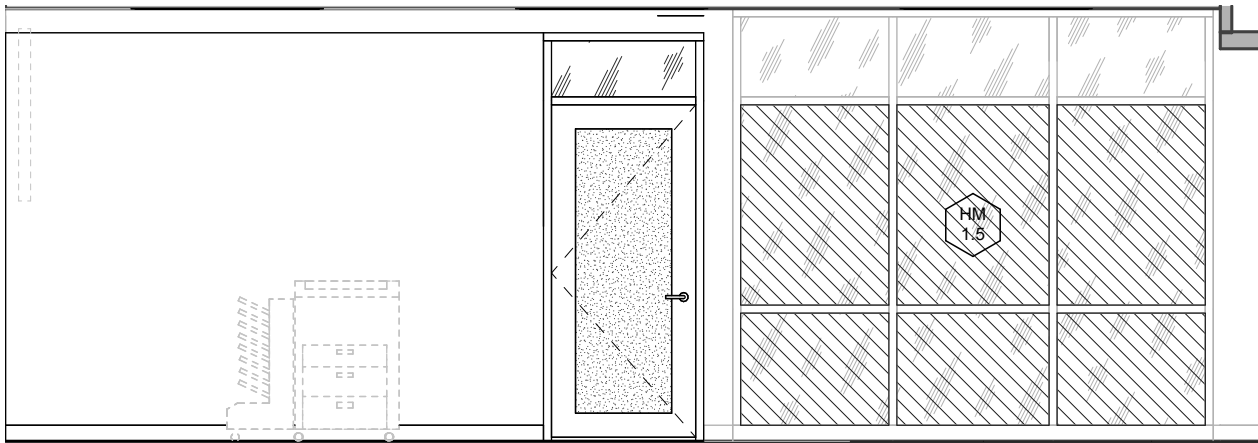
- GLAZING TYPES:  
GL-1 CLEAR FULLY TEMPERED  
GL-2 TRANSLUCENT FROSTED FULLY TEMPERED  
GL-3 TRANSLUCENT FILM ON EXISTING GLASS

**FRAME TYPES**

1/4" = 1'-0"

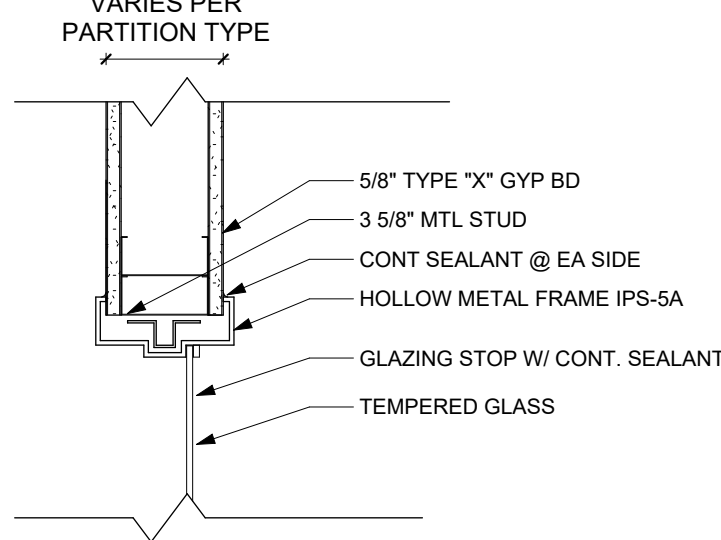
**DOOR TYPES**

1/4" = 1'-0"



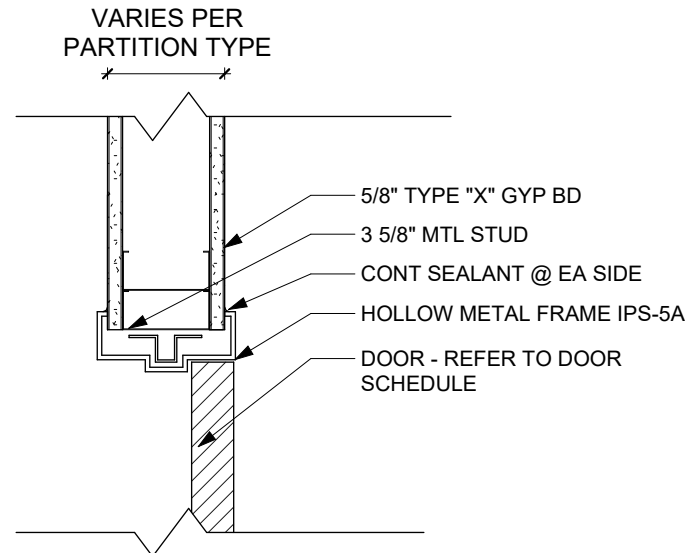
**03 OPEN OFFICE - TOWARDS STAIRS**

A701 1/4" = 1'-0"



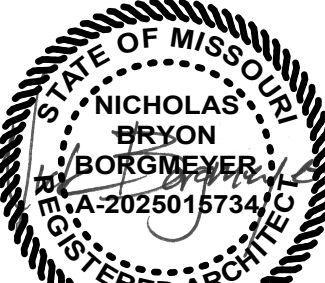
**02 DTL - TYP HM GLAZING HEAD/JAMB**

A701 1 1/2" = 1'-0"



**01 DTL - TYP HM DOOR HEAD/JAMB**

A701 1 1/2" = 1'-0"



Nicholas Bryon Borgmeyer - Architect  
License No. A-2025015734



Architecture  
Interior Design  
Planning  
Sustainability  
2801 Woodard Drive, Suite 103  
Columbia, MO 65202  
573.443.1407

[www.soa-inc.com](http://www.soa-inc.com)

Missouri Certificate of  
Authority Number: 000826

MEP ENGINEER:



812 OLD 63 SOUTH  
COLUMBIA, MO 65201  
573.875.4365

**PSRS/PEERS  
FIRST FLOOR SUITE**

3210 West Truman Blvd., Jefferson City, MO 65109

AHJ APPROVAL STAMP

ISSUE FOR BID

JULY 30, 2025

REVISION DATE

SCHEDULES

**A701**

SOA PROJECT 24064

If you must print this drawing, please  
recycle



AIR DEVICES SCHEDULE										
MARK	MFR	MODEL	MOUNTING	SERVICE	THROW	FACE SIZE	NECK SIZE	MATERIAL	FINISH	REMARKS
A8			CEILING	SUPPLY	8'	24x24	8ø	STEEL	WHITE	RELOCATE EXISTING
R10	PRICE	PDDR	CEILING	RETURN	--	24x24	10ø	STEEL	WHITE	



LOWER LEVEL MECHANICAL NEW WORK

1/4" = 1'-0"

MECHANICAL PLENUM SPACE NOTES

- MECHANICAL:  
MATERIALS EXPOSED WITHIN PLENUMS SHALL BE NONCOMBUSTIBLE OR SHALL HAVE A FLAME SPREAD INDEX OF NOT MORE THAN 25 AND A SMOKE DEVELOPED INDEX OF NOT MORE THAN 50 WHEN TESTED IN ACCORDANCE WITH ASTM E 84.
- EXCEPTIONS:
- RIGID AND FLEXIBLE DUCTS AND CONNECTORS SHALL CONFORM TO SECTION 603 OF THE 2015 INTERNATIONAL MECHANICAL CODE.
  - DUCT COVERINGS, LININGS, TAPE AND CONNECTORS SHALL CONFORM TO SECTIONS 603 AND 604 OF THE 2015 INTERNATIONAL MECHANICAL CODE.
  - THIS SECTION SHALL NOT APPLY TO SMOKE DETECTORS.

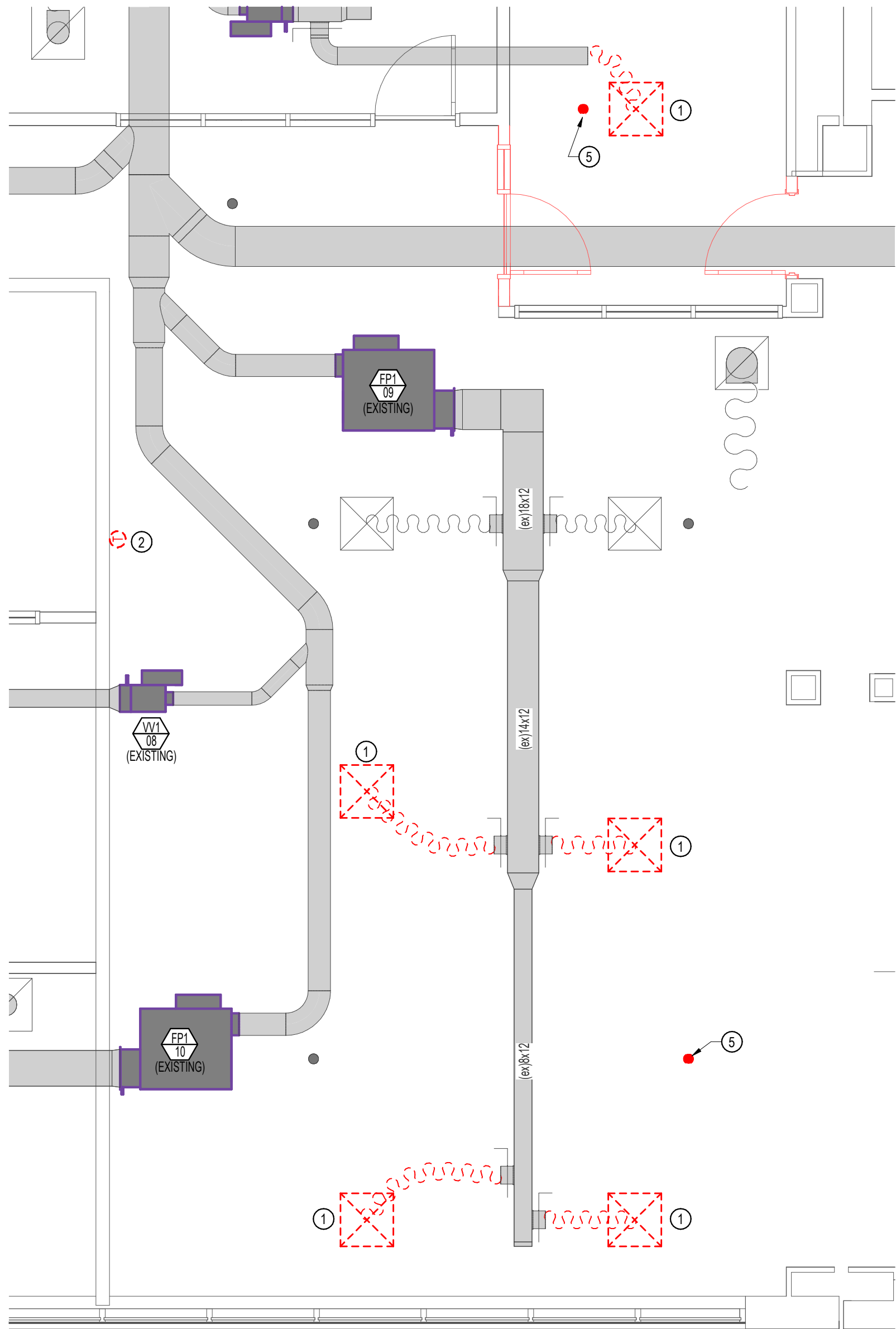
MECHANICAL GENERAL NOTES

- NEW DUCTWORK AND EQUIPMENT SHOWN IN BOLD LINETYPE. EXISTING SHOWN HALF ONE AND SHADED. EXISTING DUCT SIZES AND LOCATIONS ARE SHOWN BASED ON ORIGINAL CONSTRUCTION DRAWINGS. CONTRACTOR SHALL FIELD VERIFY EXACT LOCATIONS TO THE INFO.
- PROVIDE HARD DUCTED 90° ELBOW AND 8' OF FLEXIBLE DUCT LAID ABOVE CEILING AT ALL NEW RETURN AIR GRILLES TO REDUCE SOUND TRANSFER.
- ALL DUCTWORK SHALL BE MIN. 26 GA. UP TO 18", 24 GA. UP TO 20", 22 GA. UP TO 24", 20 GA. UP TO 28", AND 18 GA. UP TO 36" OF GALVANIZED STEEL, SEALING CLASS "B", FABRICATED AND INSTALLED IN STRICT CONFORMANCE TO SMACNA SPECIFICATIONS. ALL TEES, ELBOWS, OR CHANGES IN DIRECTIONS SHALL HAVE TURNING VANES. GRILLES AND REGISTERS SHALL BE PRICE, OR APPROVED EQUAL.
- ALL TEMPERATURE CONTROLS SHALL BE MIN. 18 GA. COPPER, PLENUM RATED CABLE. ROUGH-IN SHALL BE BY ELECTRICAL CONTRACTOR.
- DUCTWORK DIMENSIONS ARE INSIDE DIMENSIONS.
- ALL SUPPLY BRANCHES TO INDIVIDUAL DIFFUSERS MUST BE SUPPLIED WITH BALANCING DAMPERS, WHERE BRANCH TAKEOFFS ARE INACCESSIBLE (ATTICS, SOFFITS, ETC) BALANCE DAMPER SHALL BE PROVIDED AT FACE OF DIFFUSER, WHERE BRANCH TAKEOFFS ARE ACCESSIBLE (ABOVE DROP CEILING, EXPOSED DUCTS, ETC) BALANCE DAMPER SHALL BE LOCATED AT BRANCH TAKEOFF.
- ALL SYSTEMS MUST BE FIELD BALANCED TO WITHIN 10% OF THE DESIGN FLOWS INDICATED ON THE DRAWINGS. CERTIFIED AIR BALANCING IS NOT REQUIRED. CONTRACTOR MUST SUBMIT BALANCING REPORT PRIOR TO RECEIVING FINAL PAYMENT.
- FLEX DUCT (THERMAFLEX MAKE OR EQUAL) IS ALLOWED FOR FINAL CONNECTION FROM STEEL DUCTWORK TO AIR TERMINAL DEVICES ONLY. LENGTHS NOT TO EXCEED 8'-0" AND SUPPORTED PER SMACNA REQUIREMENTS. DUCTWORK SHALL NOT BE INSTALLED SUCH THAT IT RESTRICTS ACCESS TO ELECTRICAL JUNCTION BOXES OR DIRECTLY OVER ELECTRICAL PANELS.
- PROTECT DUCT INTERIORS FROM MOISTURE, DEBRIS, DUST & FOREIGN MATERIALS IN ACCORDANCE WITH SMACNA "DUCT CLEANLINESS FOR NEW CONSTRUCTION GUIDELINES".

MECHANICAL SPECIFICATIONS

MECHANICAL SYMBOL LEGEND

- TYPE OF EQUIPMENT (SEE EQUIPMENT SCHEDULE)  
REFERENCE NUMBER
- TYPE OF DIFFUSER (SEE DIFFUSER & NECK SIZE SCHEDULES)  
CFM / FACE SIZE
- SUPPLY DIFFUSER  
IF OTHER THAN 4-WAY, SHADING  
INDICATES NO FLOW ZONE
- RETURN GRILLE
- BALANCE DAMPER
- SUPPLY DUCT
- RETURN DUCT
- FLEX DUCT
- TIE INTO EXISTING
- THERMOSTAT
- SPRINKLER HEAD



LOWER LEVEL MECHANICAL DEMO

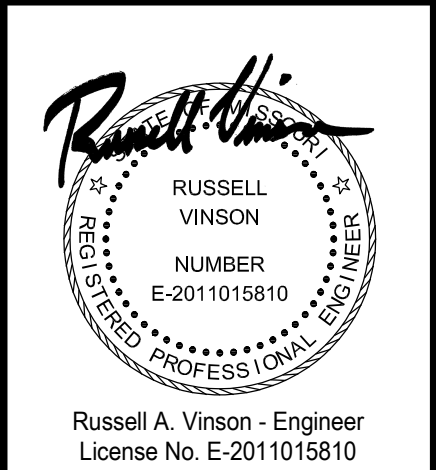
1/4" = 1'-0"

FIRE PROTECTION SPECIFICATIONS

- ALL WORK & MATERIALS SHALL BE IN COMPLIANCE WITH STATE & LOCAL CODE REQUIREMENTS. SUBCONTRACTOR SHALL OBTAIN & PAY FOR ALL PERMITS & INSPECTION FEES AS NECESSARY FOR CONSTRUCTION.
- ALL FIRE PROTECTION SYSTEMS & COMPONENTS SHALL BE IN COMPLIANCE WITH NFPA SECTIONS 13, & 24 AS WELL AS LOCAL FIRE PREVENTION REQUIREMENTS.
- FIRE SPRINKLER CONTRACTOR SHALL VERIFY WITH CURRENT NFPA THE SPRINKLER HEAD SPACING & DENSITY FOR ALL OCCUPANCY TYPES.
- SUBCONTRACTOR SHALL DO ALL NECESSARY CUTTING & PATCHING, AS WELL AS ALL NECESSARY PIPE & EQUIPMENT SUPPORTS.
- PRESSURE TEST MODIFICATIONS TO EXISTING SYSTEM & REPAIR ANY LEAKS. SUBCONTRACTOR IS RESPONSIBLE FOR ANY DAMAGE TO PROPERTY & PERSONNEL CAUSED BY FAULTY INSTALLATION OR MATERIALS.
- THE SPRINKLER SUBCONTRACTOR SHALL REFER TO PLANS & MAKE ADJUSTMENTS TO NUMBER, TYPE, & LOCATION OF HEADS, TO COMPLY WITH LOCAL CODES & NEW CONSTRUCTION. HE SHALL ALSO COORDINATE HIS FINAL SHOP DRAWINGS WITH THE OTHER TRADES TO AVOID CONFLICT WITH HIS PIPING & THE LIGHTS, PIPING, CONDUITS, & DUCTWORK OF OTHER RESPECTIVE SUBCONTRACTORS ON THIS PROJECT. SHOP DRAWINGS & APPLICABLE HYDRAULIC CALCULATIONS THAT ARE SEALED BY A FIRE PROTECTION CONSULTANT & PROFESSIONAL ENGINEER SHALL BE SUBMITTED FOR OWNER'S APPROVAL FOR ALL SPRINKLER SYSTEM MODIFICATIONS.
- SUBMIT CERTIFICATION UPON COMPLETION OF FIRE PROTECTION PIPING WORK WHICH INDICATES THAT WORK HAS BEEN TESTED IN ACCORDANCE WITH NFPA 13, AND ALSO THAT THE SYSTEM IS OPERATIONAL, COMPLETE, AND WITHOUT DEFECTS.
- INSTALL HANGERS AND SUPPORTS FOR SPRINKLER PIPING ACCORDING TO NFPA 13. COMPLY WITH REQUIREMENTS FOR HANGER MATERIALS IN NFPA 13.

KEYED NOTES

- REMOVE AIR DEVICES AND SALVAGE FOR REUSE. DEMOLISH FLEXIBLE DUCT AND EXTEND BRANCH DUCTS TO NEW DIFFUSER LOCATIONS AS REQUIRED.
- REMOVE DDC ROOM CONTROLLER AND SALVAGE FOR REUSE. EXTEND WIRING AND INSTALL AT NEW LOCATION AS REQUIRED. COORDINATE WITH OWNER'S CONTROLS CONTRACTOR (CIC).
- PROVIDE 8x12 OPENING ABOVE CEILINGS FOR RETURN AIR PATH.
- PROVIDE HARD 90° ELBOW AND 6' OF FLEX DUCT ABOVE CEILING FOR RETURN AIR SOUND DAMPENING.
- EXTEND 1" SCHEDULE 40 SPRINKLER PIPING TO RELOCATE PENDANT SPRINKLER HEAD IN CENTER OF NEW CEILING TILE AS REQUIRED.
- PROVIDE NEW 1" SCHEDULE 40 SPRINKLER PIPING FROM NEARBY 2" MAIN TO INSTALL NEW PENDANT SPRINKLER HEAD IN CENTER OF NEW OFFICE CEILING TILE AS REQUIRED. MATCH EXISTING PENDANT HEADS.



Architecture  
Interior Design  
Planning  
Sustainability  
2801 Woodard Drive, Suite 103  
Columbia, MO 65202  
573.443.1407

www.soa-inc.com  
Simon Oswald Architecture,  
Missouri Certificate of  
Authority Number: 000826

MEP ENGINEER:  
**Timberlake**  
ENGINEERING  
A Custom Engineering Company  
912 OLD 63 SOUTH  
COLUMBIA, MO 65201  
573.875.4365

**PSRS/PEERS**  
**LOWER LEVEL SUITE**  
3210 W Truman Blvd, Jefferson City, MO 65109

AHJ APPROVAL STAMP

ISSUE FOR BID  
JULY 30, 2025  
REVISION DATE

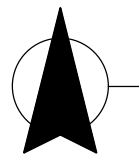
LOWER LEVEL  
RENOVATION  
MECHANICAL PLANS

**M301**

SOA PROJECT 15427

If you must print this drawing, please  
recycle





LOWER LEVEL POWER NEW WORK  
1/4" = 1'-0"

ELECTRICAL SPECIFICATIONS

1. ALL CONDUCTORS SHALL BE THIN COPPER ABOVE GRADE, XHHW-2 BELOW GRADE, MINIMUM #12 OR LARGER AS REQUIRED OR SHOWN.
2. ALL SERVICE WIRING, EXPOSED TO WEATHER, OR WIRING BELOW GRADE, SHALL BE IN RIGID GALVANIZED CONDUIT OR SCH. 40 PVC.
3. ALL OTHER WIRING SHALL BE IN EMT, SCHEDULE 40 PVC, OR MC CABLE, UNLESS PROTECTED AND ENCLOSED WITHIN BUILDING MATERIALS, IN WHICH CASE TYPE NM CABLE MAY BE USED.
4. DUPLEX RECEPTACLES SHALL BE TAMPER RESISTANT LEVITON #T580 SERIES, OR APPROVED EQUAL, 20A, GROUNDING, MATCHING COVER PLATE, COLOR AS DETERMINED BY ARCHITECT. USE SIDE WIRING ONLY.
5. THE ENTIRE SYSTEM SHALL BE ELECTRICALLY CONTINUOUS AND PROPERLY GROUNDED. EVERY FEEDER AND BRANCH CONDUIT SHALL HAVE CODE SIZED GREEN INSULATED GROUND CONDUCTOR.
6. FURNISH AND INSTALL ALL LIGHTING FIXTURES, LAMPS, FUSES, BREAKERS, ETC. TO COMPLETE THE BRANCH CIRCUITS INDICATED.
7. ALL 120V, 20A LIGHTING AND RECEPTACLE CIRCUITS REQUIRING MORE THAN 100' OF CONDUCTORS (ONE WAY) SHALL BE #10 CONDUCTORS, MINIMUM.
8. PROVIDE TYPEWRITTEN BREAKER SCHEDULE IN EACH PANELBOARD INDICATING ITEMS AND DEVICES SERVED BY ALL BREAKERS IN EACH PANEL.
9. PERMANENTLY LABEL DISCONNECTS FOR HVAC EQUIPMENT WITH EQUIPMENT SERVED, AND PANEL AND CIRCUIT NUMBER.
10. UNDERGROUND SPLICES TO BE MADE WITH DEVICES RATED FOR THAT APPLICATION.
11. ALL ELECTRICAL PANELS AND DISCONNECTS SHALL HAVE A PERMANENT ARC-FLASH LABEL AFFIXED PER NEC 110.16.

POWER SYMBOL LEGEND

- ⌀ XX POWER RECEPTACLE  
MOUNTING HEIGHT (INCHES)  
IF OTHER THAN 18" AFF. (BOTTOM OF BOX)
- ⌀ QUADPLEX CONVENIENCE OUTLET
- ▶ DATA / TELEPHONE JACK (MOUNTED @ 18" AFF. U.N.O.)  
OUTLET BOX WITH 1" CONDUIT UP TO CEILING SPACE.  
CABLES AND COVER PLATES BY OWNER.  
PHONE / DATA CABLING TO BE PLENUM RATED.
- TV ▶ WALL MOUNTED TV DATA (MOUNTED 84" AFF. TO CENTER U.N.O.)  
OUTLET BOX WITH 1" CONDUIT UP TO CEILING.  
CABLES AND COVER PLATES BY OWNER.
- ⊙ JUNCTION BOX
- ⊙ TIE INTO EXISTING

ELECTRICAL PLENUM SPACE NOTES

WIRING EXPOSED WITHIN A PLENUM SHALL CONFORM TO THE FOLLOWING:  
COMBUSTIBLE ELECTRICAL OR ELECTRONIC WIRING METHODS AND MATERIALS, OPTICAL FIBER CABLE, AND OPTICAL FIBER RACEWAY EXPOSED WITHIN A PLENUM SHALL HAVE A PEAK OPTICAL DENSITY NOT GREATER THAN 0.50, AN AVERAGE OPTICAL DENSITY NOT GREATER THAN 0.15, AND A FLAME SPREAD NOT GREATER THAN 5 FEET WHEN TESTED IN ACCORDANCE WITH UL 910. ONLY TYPE OFNP (PLENUM RATED NONCONDUCTIVE OPTICAL FIBER CABLE) SHALL BE INSTALLED IN A PLENUM RATED OPTICAL FIBER RACEWAY.

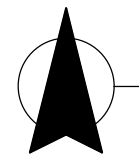
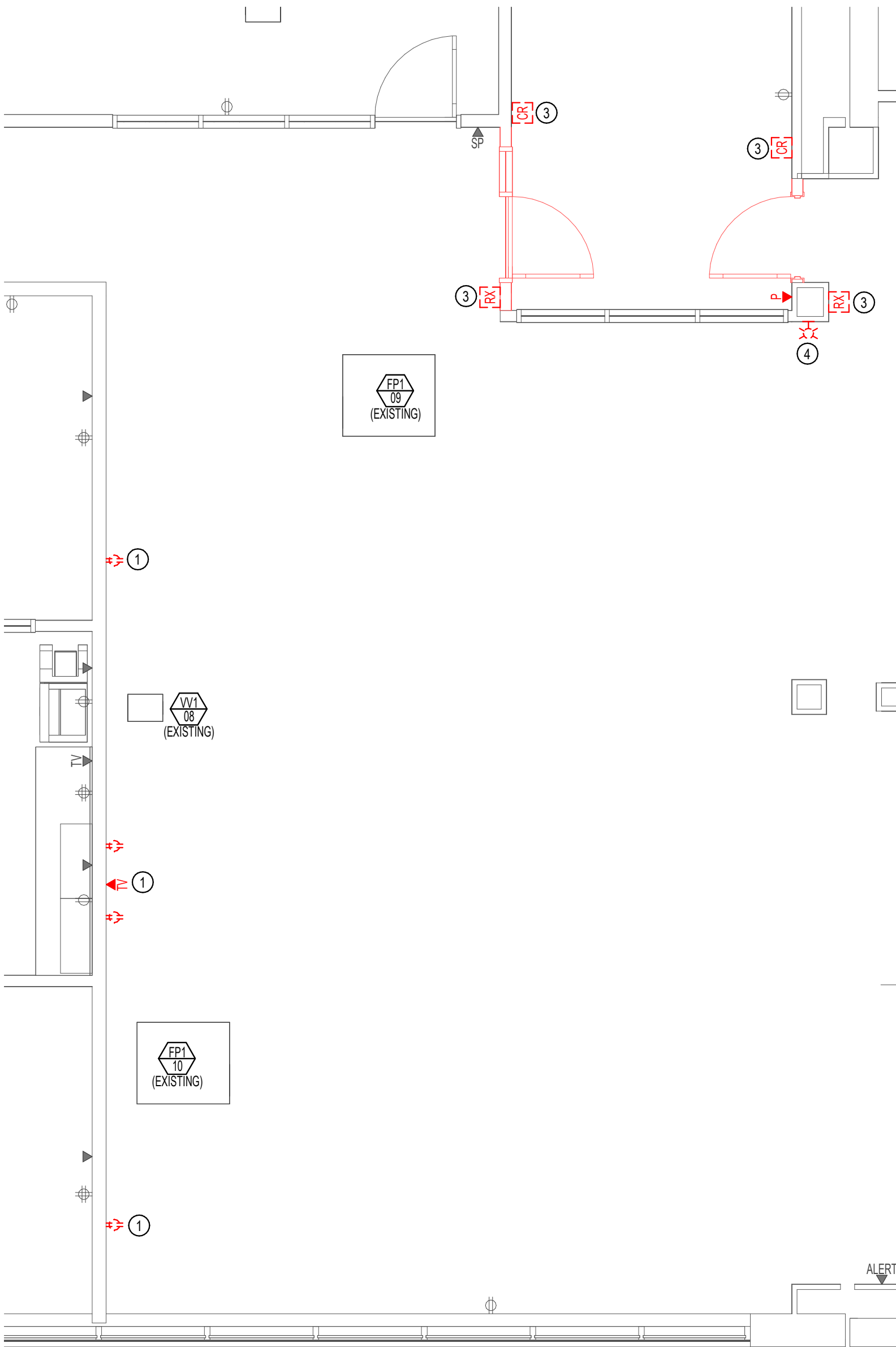
COMBUSTIBLE ELECTRICAL EQUIPMENT WITHIN A PLENUM SHALL CONFORM TO THE FOLLOWING:  
COMBUSTIBLE ELECTRICAL EQUIPMENT EXPOSED WITHIN A PLENUM SHALL HAVE A PEAK RATE OF HEAT RELEASE NOT GREATER THAN 100 Kilo-Watts, A PEAK OPTICAL DENSITY NOT GREATER THAN 0.50, AND AN AVERAGE OPTICAL DENSITY NOT GREATER THAN 0.15 WHEN TESTED IN ACCORDANCE WITH UL 2043. COMBUSTIBLE ELECTRICAL EQUIPMENT SHALL BE LISTED AND LABELED.

ELECTRICAL GENERAL NOTES

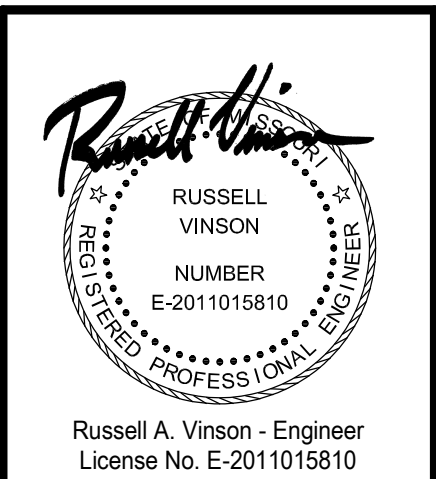
1. PROVIDE NEW 120V 20A BREAKERS IN PREPARED SPACES IN EXISTING PANELS AS REQUIRED.

KEYED NOTES

1. DEMOLISH RECEPTACLES AND TV/DATA OUTLETS. MARK DEMOLISHED CIRCUITS AS SPARES AND/OR EXTEND AS REQUIRED FOR NEW CIRCUITS.
2. PROVIDE HARDWIRE POWER CONNECTION TO OWNER'S FURNITURE AS REQUIRED. COORDINATE LOCATION PRIOR TO ROUGH-IN.
3. REMOVE AND RELOCATE (2) EXISTING CARD READERS, MAGNETIC LOCKS AND PUSH-TO-EXIT BUTTONS. PROVIDE NEW BOXES AND RACEWAYS AS REQUIRED. COORDINATE WITH NEW DOOR HARDWARE AND OWNER'S SECURITY VENDOR.
4. REMOVE AND RELOCATE FIRE ALARM STROBE TO NEW CORRIDOR WALL.
5. COORDINATE ROUGH-IN LOCATION AND HEIGHT FOR WALL MOUNTED TELEVISION POWER & DATA.
6. INSTALL NEW FIRE ALARM HORN/STROBE IN NEW OPEN OFFICE. EXTEND EXISTING NOTIFICATION CIRCUIT TO INCLUDE NEW DEVICE AS REQUIRED. COORDINATE WITH OWNER'S FIRE ALARM MONITORING SERVICE.



LOWER LEVEL POWER DEMO  
1/4" = 1'-0"



Architecture  
Interior Design  
Planning  
Sustainability  
2801 Woodard Drive, Suite 103  
Columbia, MO 65202  
573.443.1407  
[www.soa-inc.com](http://www.soa-inc.com)  
Simon Oswald Architecture,  
Missouri Certificate of  
Authority Number: 000826

MEP ENGINEER:  
 **Timberlake**  
ENGINEERING  
A Custom Engineering Company  
912 OLD 63 SOUTH  
COLUMBIA, MO 65201  
573.875.4365

**PSRS/PEERS**  
**LOWER LEVEL SUITE**  
3210 W Truman Blvd, Jefferson City, MO 65109

AHJ APPROVAL STAMP

ISSUE FOR BID  
JULY 30, 2025  
REVISION DATE

LOWER LEVEL  
RENOVATION POWER  
PLAN

**E201**

SOA PROJECT 15427  
 If you must print this drawing, please  
recycle



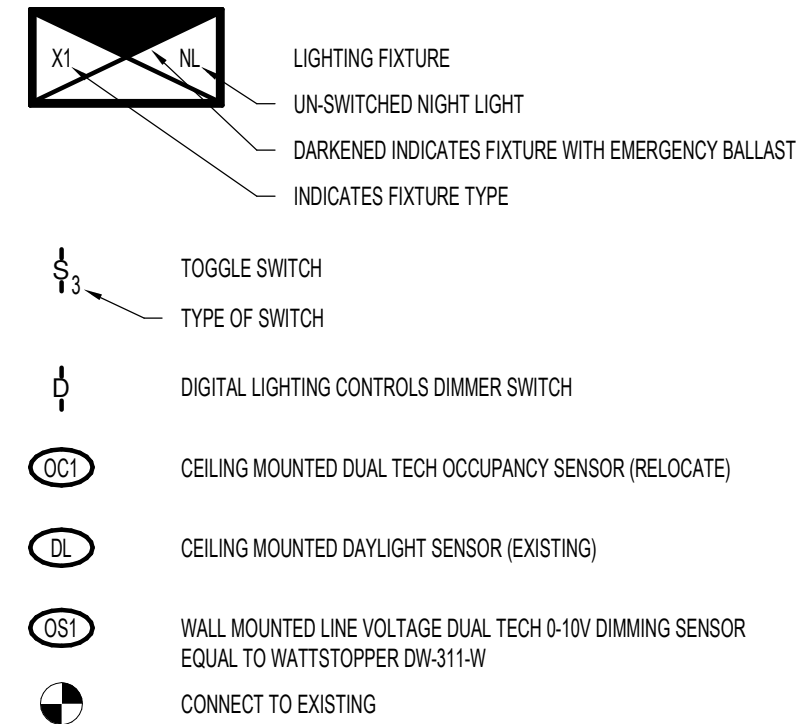
LIGHTING FIXTURE SCHEDULE												
MARK	MANUFACTURER	MODEL	DESCRIPTION	VOLTS	WATTS	AMPS	LUMENS	CCT (*K)	CRI	LAMPS	MOUNTING	NOTES
A	METALUX	24CZSCT3-UNV	2x4 TROFFER	120	34	0.3	5000	3500	80	LED	RECESSED	SELECTABLE CCT & LUMEN
B	METALUX	22CZSCT3-UNV	2x2 TROFFER	120	26	0.2	3500	3500	80	LED	RECESSED	SELECTABLE CCT & LUMEN
E	SURE-LITES	EUX72RWH	EXIT LIGHT	120	1					LED	CEILING	MIRRORED INSERT FOR DOUBLE SIDED



LOWER LEVEL LIGHTING NEW WORK

1/4" = 1'-0"

LIGHTING SYMBOL LEGEND



ELECTRICAL PLENUM SPACE NOTES

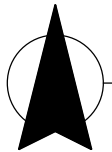
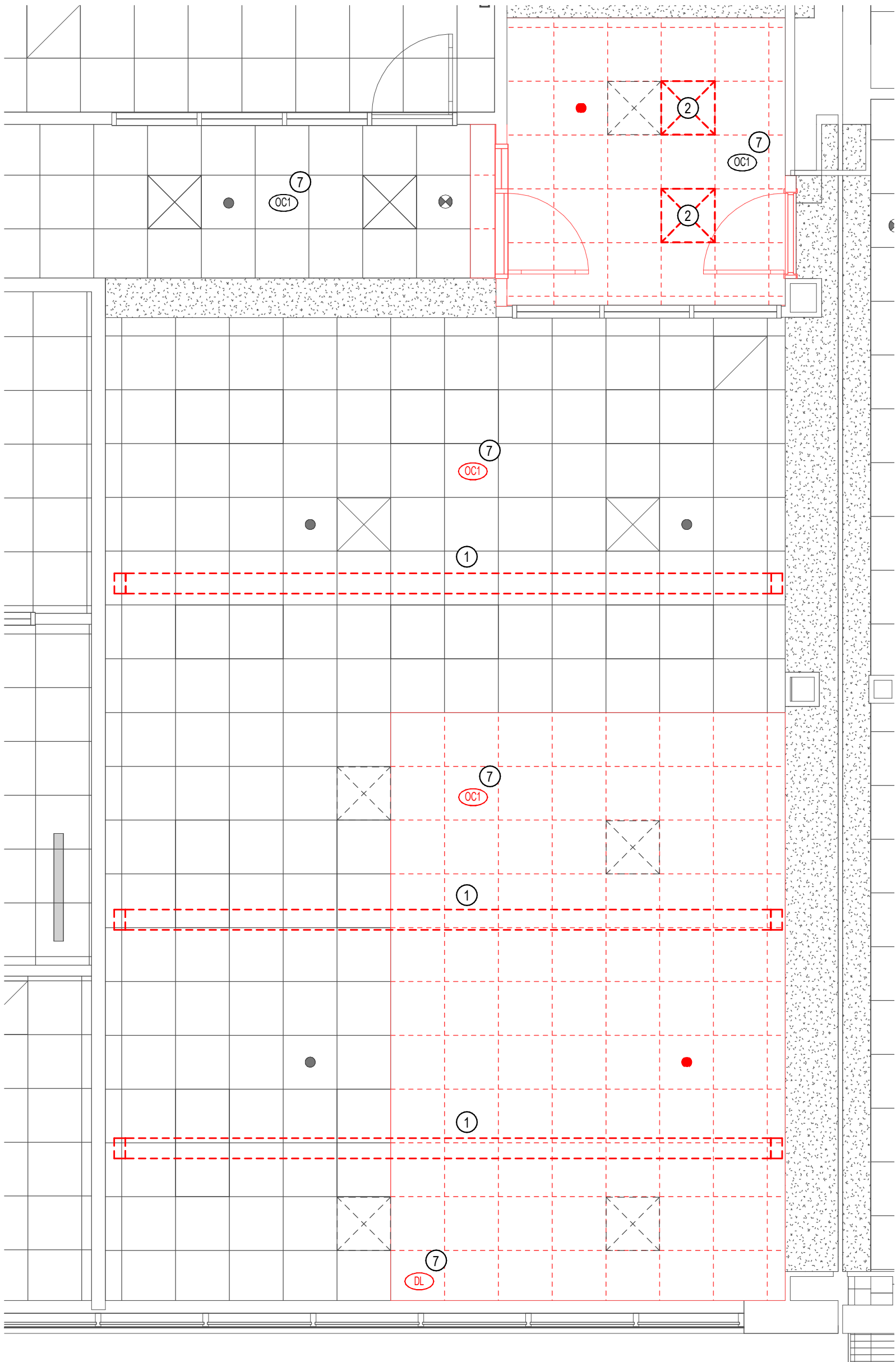
WIRING EXPOSED WITHIN A PLENUM SHALL CONFORM TO THE FOLLOWING:  
COMBUSTIBLE ELECTRICAL OR ELECTRONIC WIRING METHODS AND MATERIALS, OPTICAL FIBER CABLE, AND OPTICAL FIBER RACEWAY EXPOSED WITHIN A PLENUM SHALL HAVE A PEAK OPTICAL DENSITY NOT GREATER THAN 0.50, AN AVERAGE OPTICAL DENSITY NOT GREATER THAN 0.15, AND A FLAME SPREAD NOT GREATER THAN 5 FEET WHEN TESTED IN ACCORDANCE WITH UL 910. ONLY TYPE OFWP (PLENUM RATED NONCONDUCTIVE OPTICAL FIBER CABLE) SHALL BE INSTALLED IN A PLENUM RATED OPTICAL FIBER RACEWAY.  
COMBUSTIBLE ELECTRICAL EQUIPMENT WITHIN A PLENUM SHALL CONFORM TO THE FOLLOWING:  
COMBUSTIBLE ELECTRICAL EQUIPMENT EXPOSED WITHIN A PLENUM SHALL HAVE A PEAK RATE OF HEAT RELEASE NOT GREATER THAN 100 KILLO-WATTS, A PEAK OPTICAL DENSITY NOT GREATER THAN 0.50, AND AN AVERAGE OPTICAL DENSITY NOT GREATER THAN 0.15 WHEN TESTED IN ACCORDANCE WITH UL 2043. COMBUSTIBLE ELECTRICAL EQUIPMENT SHALL BE LISTED AND LABELED.

GENERAL LIGHTING NOTES

- EMERGENCY LIGHTING PROVIDED BY EXISTING EMERGENCY GENERATOR AND AUTOMATIC TRANSFER SWITCH. EMERGENCY SYSTEM SHALL HAVE ADEQUATE CAPACITY AND RATING FOR ALL LOADS TO BE OPERATED SIMULTANEOUSLY.

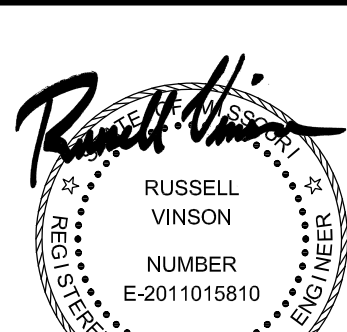
KEYED NOTES

- REMOVE LIGHT FIXTURES AND SALVAGE TO OWNER. DEMOLISH WIRING TO AN ACCESSIBLE JUNCTION BOX AND EXTEND CIRCUIT TO NEW FIXTURES AS REQUIRED.
- REMOVE LIGHT FIXTURES AND RELOCATE IN NEW CEILING GRID. EXTEND WIRING AS REQUIRED.
- CONNECT NEW LIGHTING TO EXISTING LIGHTING CIRCUIT PREVIOUSLY SERVING FIXTURES IN THIS AREA. EXTEND WIRING AS REQUIRED.
- PROVIDE LINE VOLTAGE DUAL TECH DIMMING WALL SENSORS IN OFFICES. EQUAL TO WATTSTOPPER DW-311. LOCATE SWITCHES SO THEY WILL NOT BE BLOCKED BY DOOR SWING IN OPEN POSITION. SET FOR AUTO-ON AT 50% INTENSITY PER IECC REQUIREMENTS.
- PROVIDE NEW WATTSTOPPER DIGITAL LIGHTING LOAD CONTROLLER WITH 0-10V DIMMING AND DIMMING SWITCH COMPATIBLE WITH EXISTING CEILING OCCUPANCY SENSORS. CONNECT NEW LOAD CONTROLLER TO EXISTING CIRCUIT. DIMMER SWITCH, CEILING SENSORS AND FIXTURES AS REQUIRED. PROGRAM LIGHTS FOR AUTO-ON AT 50% INTENSITY PER IECC REQUIREMENTS.
- CONNECT NEW FIXTURE TO EXISTING CORRIDOR LIGHTING CIRCUIT AS REQUIRED.
- REMOVE EXISTING CEILING SENSOR AND SALVAGE TO OWNER OR REUSE WITH NEW LIGHTING CONTROLS.
- RELOCATE EXISTING CEILING OCCUPANCY SENSORS IN CENTER OF NEW CEILING TILE AND CONNECT TO LIGHTING CONTROLS AS REQUIRED.



LOWER LEVEL LIGHTING DEMO

1/4" = 1'-0"



Russell A. Vinson - Engineer  
License No. E-2011015810



Architecture  
Interior Design  
Planning  
Sustainability  
2801 Woodard Drive, Suite 103  
Columbia, MO 65202  
573.443.1407  
[www.soa-inc.com](http://www.soa-inc.com)  
Simon Oswald Architecture,  
Missouri Certificate of  
Authority Number: 000826

MEP ENGINEER:



912 OLD 63 SOUTH  
COLUMBIA, MO 65201  
573.875.4365

PSRS/PEERS  
LOWER LEVEL SUITE

3210 W Truman Blvd, Jefferson City, MO 65109

AHJ APPROVAL STAMP

ISSUE FOR BID  
JULY 30, 2025  
REVISION DATE

LOWER LEVEL  
RENOVATION LIGHTING  
PLAN

E202

SOA PROJECT 15427

If you must print this drawing, please  
recycle